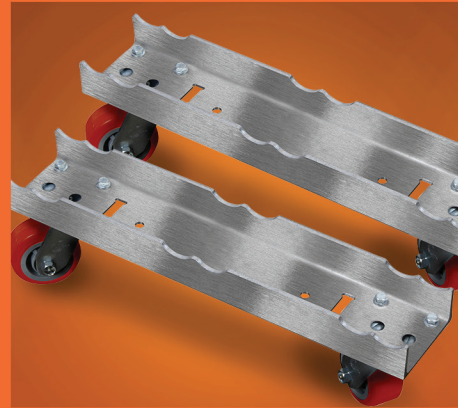
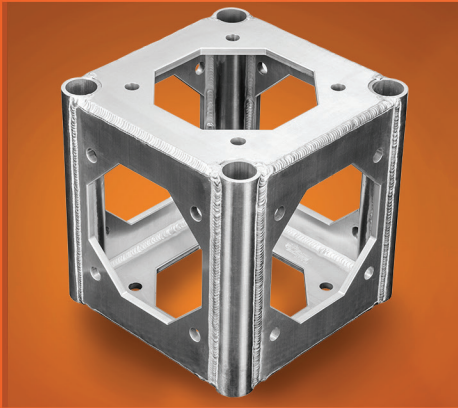
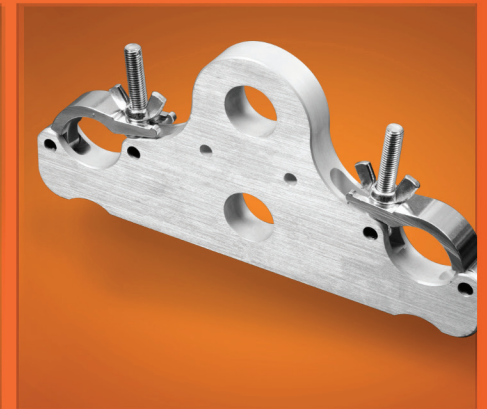
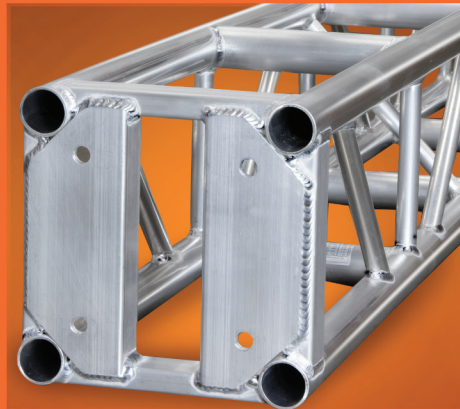




SHOW SOLUTIONS®

STRONG STRUCTURAL SUPPORT MADE EASY!



www.ShowSolutions.com



CIRCLE TRUSS

12" x 12" EP SERIES

www.ShowSolutions.com

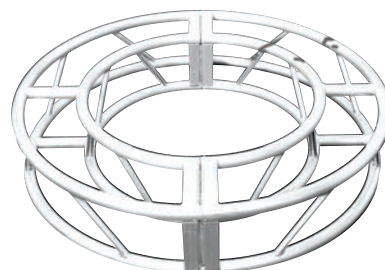
Our 12" EP Circle Truss is a favorite choice of production houses and party event companies & retail store display design. Compatible with industry standard plated truss bolt pattern.

FEATURES

- Compatible with industry standard plated truss bolt pattern.
- 6061-T6 Aluminium Finish
- 12" x 12"
- 2" x 2 mm Wall Thickness Main Tube
- 1" x 0.125" Diagonal Brace

STOCK SIZES	DESCRIPTION
EP12C502	5' OD diameter, 2 sections
EP12C104	10' OD diameter, 4 sections
EP12C154	15' OD diameter, 4 sections
EP12C208	20' OD diameter, 8 sections

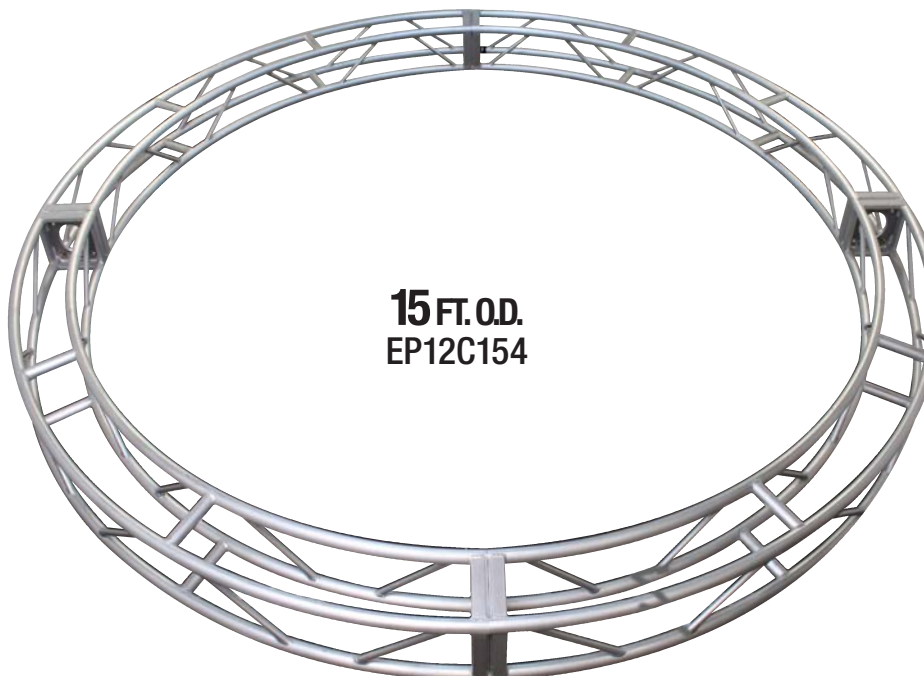
Bolts Included. Call for Custom Size.



5 FT. O.D.
EP12C502



10 FT. O.D.
EP12C104

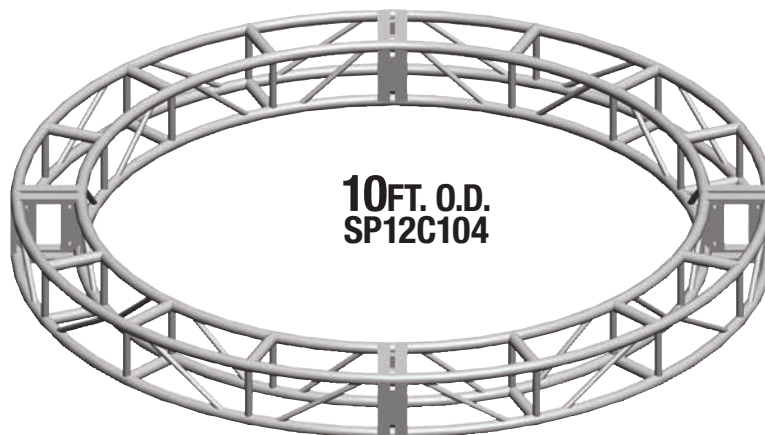


15 FT. O.D.
EP12C154

Show Solutions specializes in custom circle truss configurations.

Our ability to work with you in the design and production is what makes us the go-to company for custom circles from a diameter of 5 feet to 100 feet, in the segments you want to work with as well.

And yes, we can custom powder coat to suit the project as well.

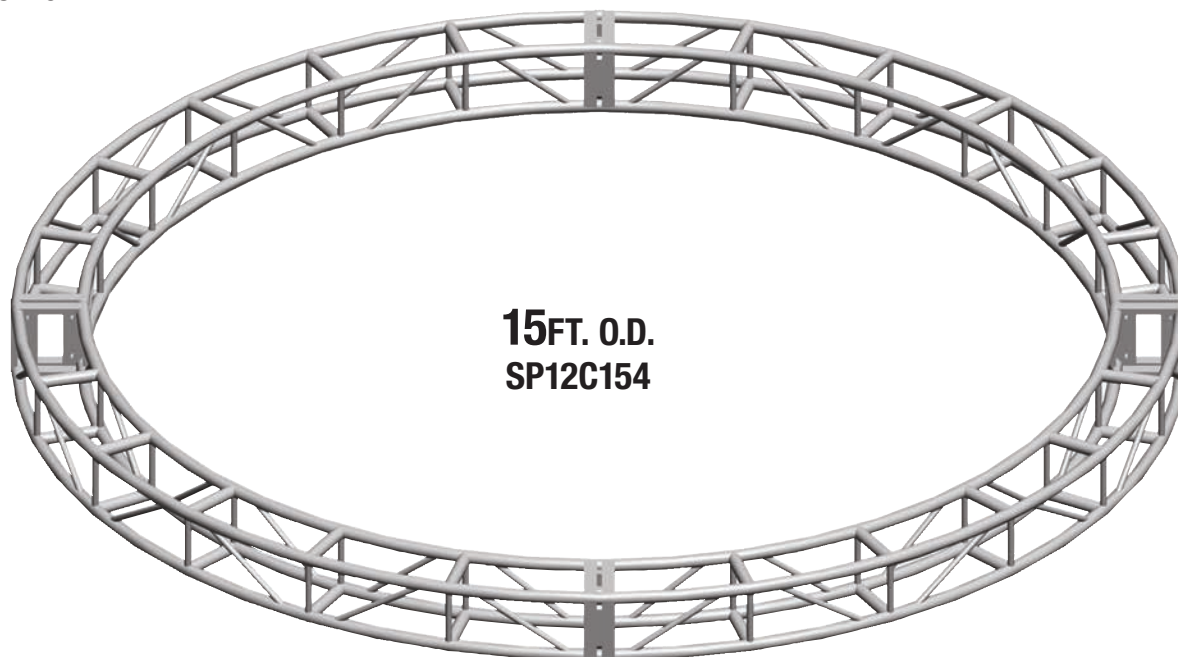


Our SP Pro Circle Truss is an industry standard used by concert tours, production houses, theatres, trade shows, houses of worship and large scale stage set-ups. Compatible with industry standard plated truss bolt pattern.

The 12" box 2" OD main tube truss is made of 6061-T6 aluminium and is compatible with the industry standard plated truss bolt pattern.

FEATURES

- Compatible with industry standard plated truss bolt pattern.
- 6061-T6 Aluminium Finish
- 12" x 12"
- 2" x 1/8" Main Tube
- 1" x 1/8" Diagonal Brace
- Bolts Included



STOCK SIZES	DESCRIPTION
SP12C602	6' OD diameter, 2 sections
SP12C104	10' OD diameter, 4 sections
SP12C154	15' OD diameter, 4 sections
SP12C208	20' OD diameter, 8 sections

CIRCLE TRUSSES

20.5" x 20.5" SP SERIES

www.ShowSolutions.com

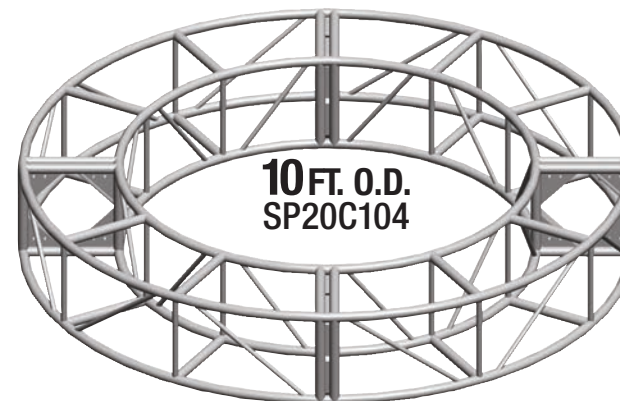
Our **20.5"x 20.5"** SP Series Pro Circle Truss is built to the highest industry standards and is used in large scale production touring companies and utilized in concert venues worldwide.

Our ability to work with you in the design and production is what makes us the go-to company for custom circles from a diameter of 5 feet to 100 feet, in the segments you want to work with as well.

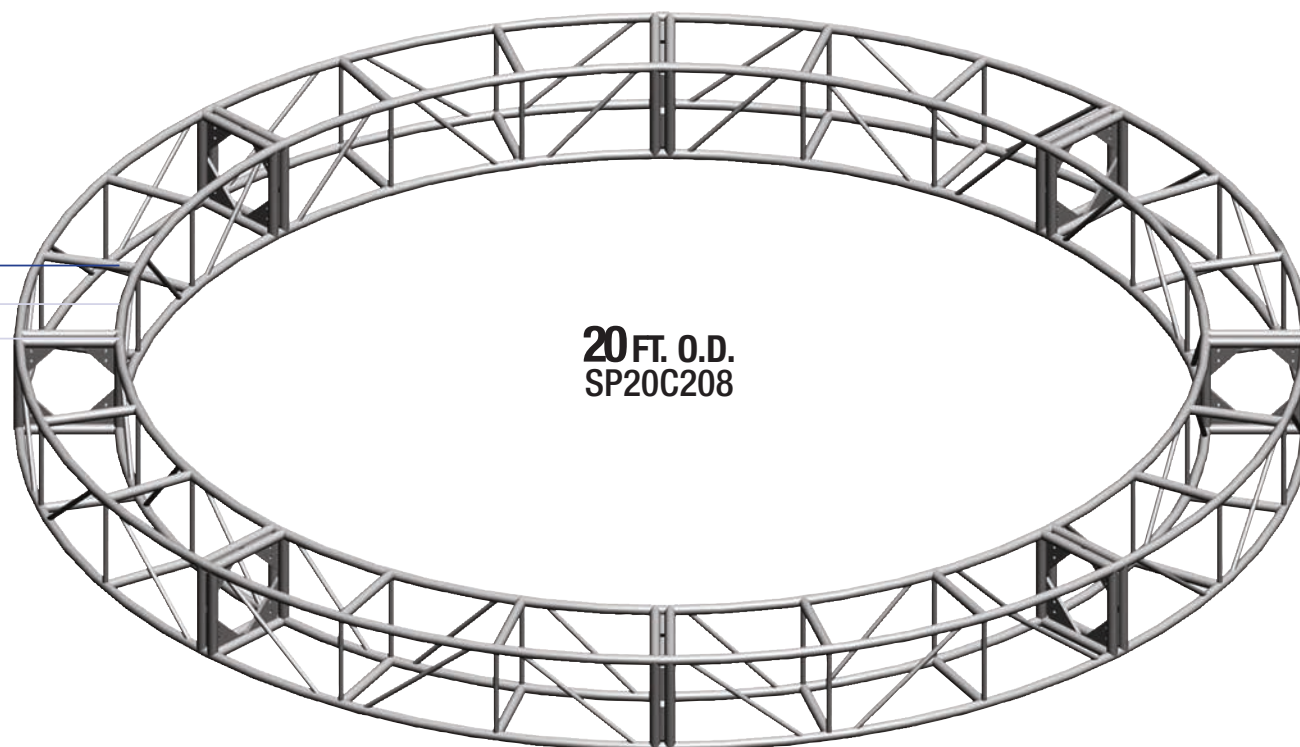
FEATURES

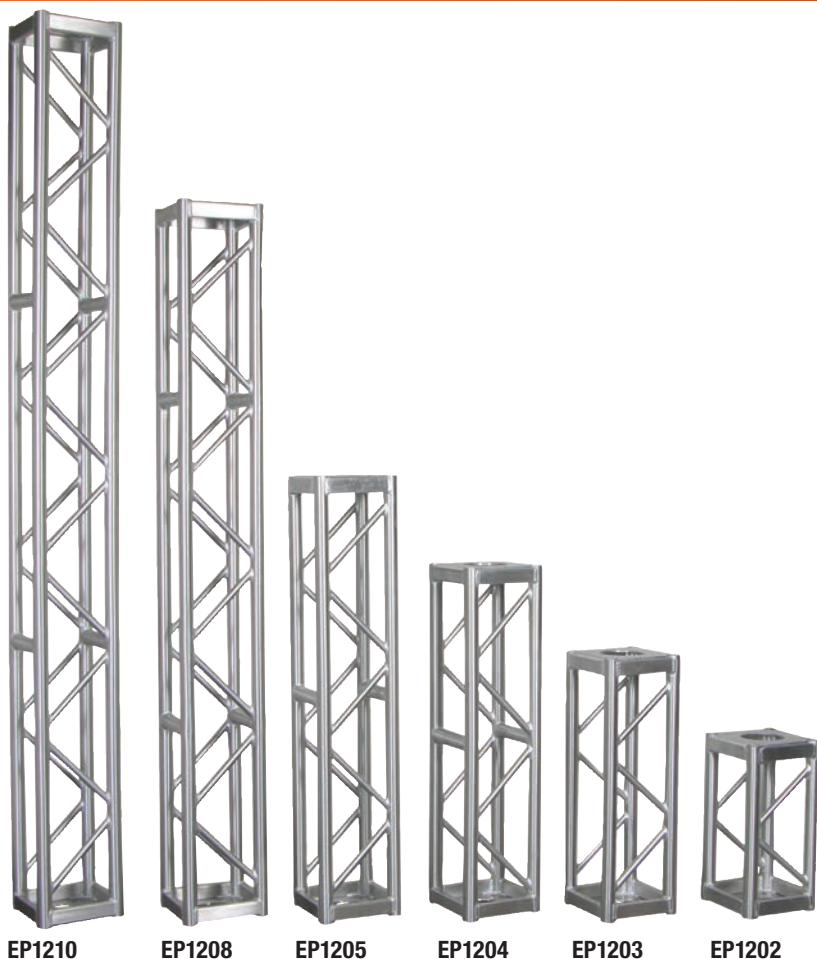
- Compatible with industry standard plated truss bolt pattern
- 6061-T6 Aluminium Finish
- 20.5" x 20.5" Square
- 2" x 1/8" Main Tube
- 1" x 1/8" Diagonal Brace
- Bolts Included

STOCK SIZES	DESCRIPTION
SP20C104	10' OD diameter, 4 sections
SP20C208	20' OD diameter, 8 sections



**Custom Diameters and Colors Available.
Call for a free quote.**





Our EP Series is an excellent choice for events, exhibits, museums, retail store display design, architectural displays and trade shows. Compatible with the industry standard plated truss bolt pattern.

All sticks of truss include a set of:

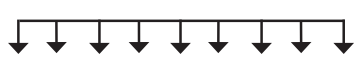



- (4) Grade 8 Bolts
- (4) Nuts
- (8) Washers.

FEATURES

- Compatible with industry standard plated truss bolt pattern
- 6061-T6 Aluminum
- 12"x 12"
- 2" O.D. x (2mm) Main Chords
- 1" O.D. x (2mm) Diagonals

SKU	DESCRIPTION
EP-1202	24" LONG (2 ft)
EP-1203	36" LONG (3 ft)
EP-1204	48" LONG (4 ft)
EP-1205	60" LONG (5 ft)
EP-1206	72" LONG (6 ft)
EP-1207	84" LONG (7 ft)
EP-1208	96" LONG (8 ft)
EP-1209	108" LONG (9 ft)
EP-1210	120" LONG (10 ft)

12 X 12 EP SERIES Maximum Allowable Uniform Loads

SPAN ft. (m)				Center Point 		Third Point 		Quarter Point 	
	Load lbs/ft.	Load lbs (kg)	Max Defl. In	Load lbs (kg)	Max Defl. In	Load lbs (kg)	Max Defl. In	Load lbs (kg)	Max Defl. In
10 (3.05)	295	2950 (1338)	0.19	2700 (1225)	0.28	1285 (593)	0.22	765 (347)	0.18
20 (6.10)	65	1300 (590)	0.54	680 (308)	0.46	490 (222)	0.55	335 (152)	0.53
30 (9.14)	30	900 (408)	1.23	650 (295)	1.42	330 (150)	1.22	255 (116)	1.34
40 (12.2)	15	600 (272)	2.00	315 (143)	1.71	235 (107)	2.11	155 (70)	1.97

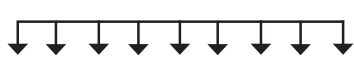


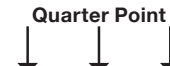


Our ST1212 **12" x 12"** Pro Series truss is designed and built to today's industry's standards, used by lighting designers, fitness & ninja gyms, theme parks, houses of worship, concert tours, production houses, and large scale stage set-up companies.

The main chord is constructed of 2"OD x 1/8" 6061-T6 aluminum tubing, and plates that are compatible with industry standard bolt patterns.

FEATURES

- Compatible with industry standard plated truss bolt pattern.
- 6061-T6 Aluminum
- 12" x 12" Square Box Truss
- 2" OD x 1/8" Main Chords
- 1" OD x 1/8" Diagonals

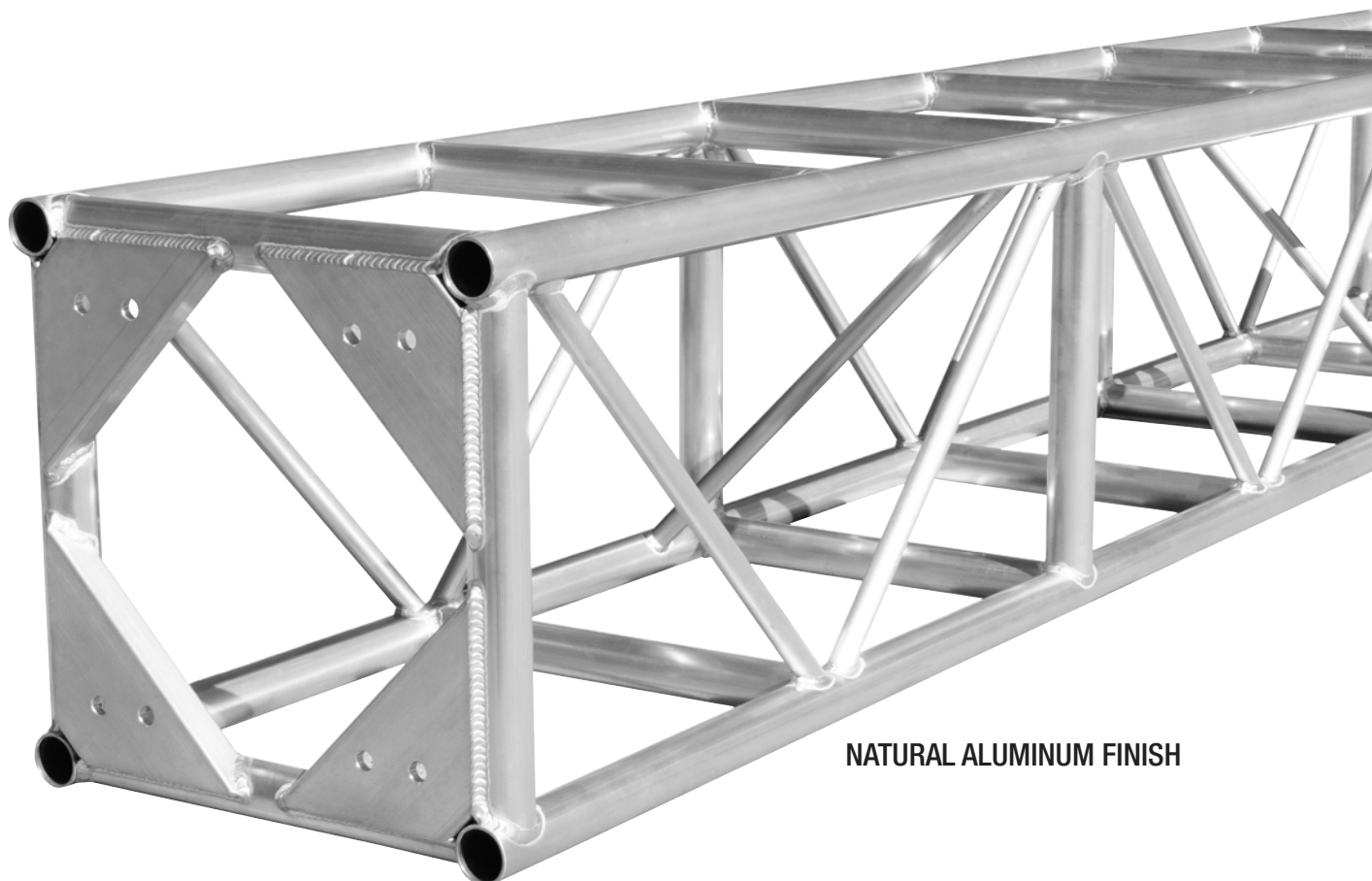
12 X 12 ST 12 PRO SERIES Maximum Allowable Uniform Loads									
SPAN ft. (m)				Center Point 		Third Point 		Quarter Point 	
	Load lbs/ft.	Load lbs (kg)	Max Defl. In	Load lbs (kg)	Max Defl. In	Load lbs (kg)	Max Defl. In	Load lbs (kg)	Max Defl. In
10 (3.05)	472	4720 (2141)	0.32	2710 (1229)	0.29	1744 (791)	0.33	1110 (503)	0.31
20 (6.10)	115	2300 (1043)	0.65	1206 (547)	0.56	888 (403)	0.68	633 (287)	0.68
30 (9.14)	60	1800 (816)	1.63	880 (399)	1.31	600 (272)	1.48	428 (194)	1.54
40 (12.2)	31	1240 (562)	2.68	580 (263)	2.04	442 (200)	2.62	308 (140)	2.54

SKU	DESCRIPTION
ST-1212-012	12" LONG (1 ft)
ST-1212-024	24" LONG (2 ft)
ST-1212-036	36" LONG (3 ft)
ST-1212-048	48" LONG (4 ft)
ST-1212-060	60" LONG (5 ft)
ST-1212-072	72" LONG (6 ft)
ST-1212-096	96" LONG (8 ft)
ST-1212-120	120" LONG (10 ft)

Our ST2020 **20.5" x 20.5"** Pro Series is the industry standard Truss used by concert tours, production houses and large scale staging companies. The main chord is made of a 2" O.D. x 1/8" 6061-T6 aluminum tube, and the bolt plates are compatible with industry standard bolt patterns.

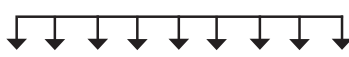



FEATURES

- Compatible with industry standard plated bolt pattern
- 6061-T6 Aluminum
- 20.5"x 20.5" Square
- 2" OD x 1/8" Main Chords
- 1" OD x 1/8" Diagonals



NATURAL ALUMINUM FINISH

SKU	DESCRIPTION
ST-2020-024	24" LONG (2 ft)
ST-2020-036	36" LONG (3 ft)
ST-2020-048	48" LONG (4 ft)
ST-2020-060	60" LONG (5 ft)
ST-2020-072	72" LONG (6 ft)
ST-2020-096	96" LONG (8 ft)
ST-2020-120	120" LONG (10 ft)

20.5 X 20.5 ST 20 PRO SERIES Maximum Allowable Uniform Loads									
SPAN ft. (m)				Center Point 		Third Point 		Quarter Point 	
	Load lbs/ft.	Load lbs (kg)	Max Defl. In	Load lbs (kg)	Max Defl. In	Load lbs (kg)	Max Defl. In	Load lbs (kg)	Max Defl. In
10 (3.05)	840	8400 (3810)	0.19	4745 (2152)	0.18	3450 (1565)	0.20	2270 (1030)	0.19
20 (6.10)	230	4600 (2087)	0.44	2306 (1046)	0.38	1729 (784)	0.43	1153 (523)	0.42
30 (9.14)	105	3150 (1429)	0.88	1510 (684)	0.70	1120 (508)	0.85	810 (367)	0.90
40 (12.2)	55	2200 (998)	1.41	1080 (490)	1.14	800 (363)	1.40	540 (245)	1.33

HEAD BLOCK

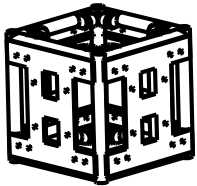


SKU	DESCRIPTION
SBTHB	Head Block for 12"x12" tower truss

ADAPTER PLATE

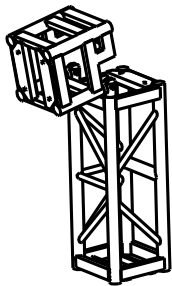


SKU	DESCRIPTION
SPHB20ADP	Adapter Plate for mounting head block onto 20.5"x 20.5" tower truss



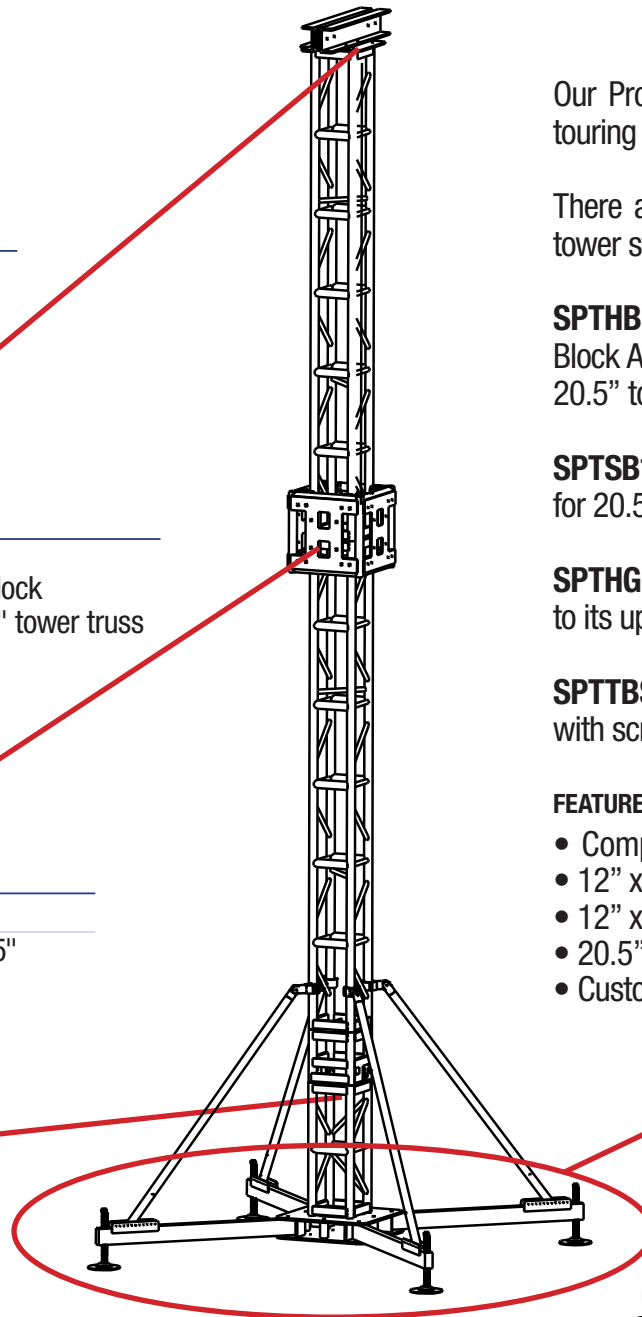
SLEEVE BLOCKS

SKU	DESCRIPTION
SPTSB12	Sleeve Block 12" x 12"
SPTSB20	Sleeve Block 20.5" x 20.5"



HINGE BLOCKS

SKU	DESCRIPTION
SPTHG	Hinge Block (w/Set of 4 spigots)



Our Pro Series Tower System is the industry standard used by professional touring production companies.

There are 4 major components used besides the truss sticks to complete a tower system.

SPTHB HEAD BLOCK mounts to the very top of the tower. (SPHB20ADP Head Block Adapter plate is available for mounting SPTHB Head Block onto the top of 20.5" tower truss sticks.)

SPTSB12 SLEEVE BLOCKS come with 4 sided plates to bolt on 12" or SPTSB20 for 20.5" truss and both come with 16 smooth high impact rollers.

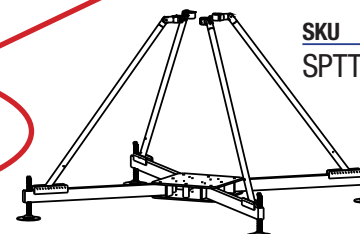
SPTHG HINGE BLOCKS are used to facilitate the ease of lifting the tower truss to its upright position.

SPTTBS STEEL BASE with Outriggers is comprised of 4 stabilizing bars each with screw jack leveling pads. Each outrigger is 50" long.

FEATURES

- Compatible with industry standard plated truss bolt pattern.
- 12" x 12" Square Tower Truss
- 12" x 12" Square Truss Sleeve Block
- 20.5" x 20.5" Sleeve Block Available
- Custom Lengths and Sizes Available

STEEL BASE



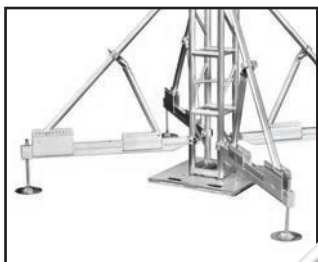
SKU	DESCRIPTION
SPTTBS	Steel/Aluminium Base with Outriggers



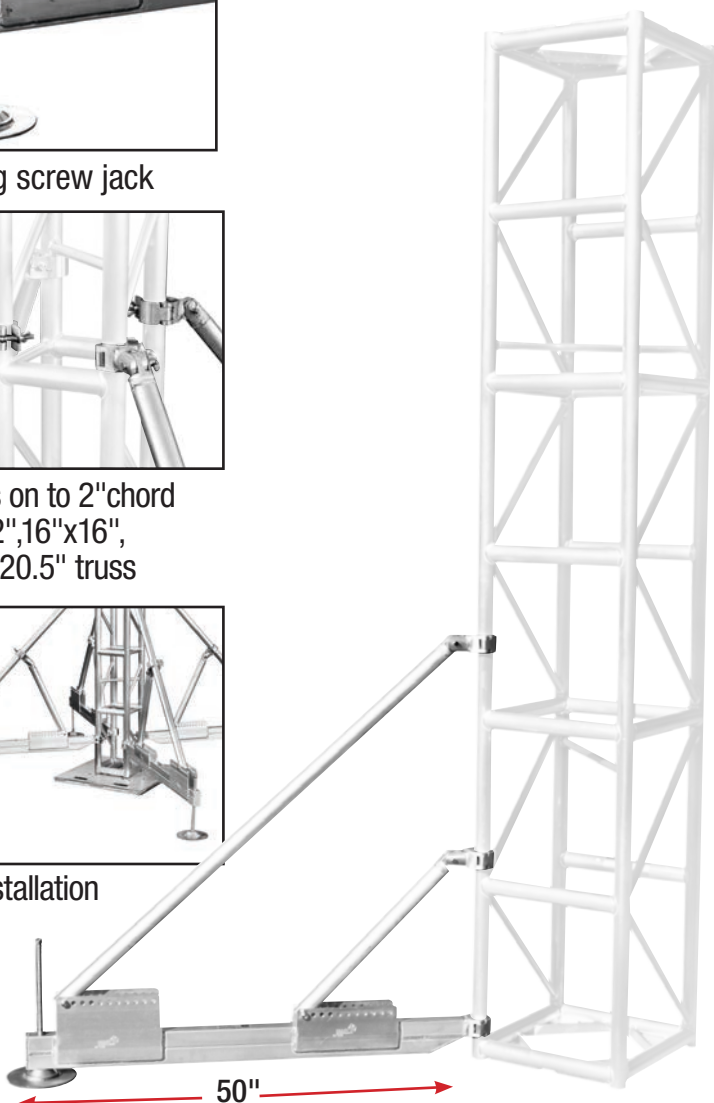
Leveling screw jack



Clamps on to 2" chord
12"x 12", 16"x 16",
20.5"x 20.5" truss



Easy Installation



SKU	DESCRIPTION
OUTRIGGERC50	SINGLE OUTRIGGER 50" LONG

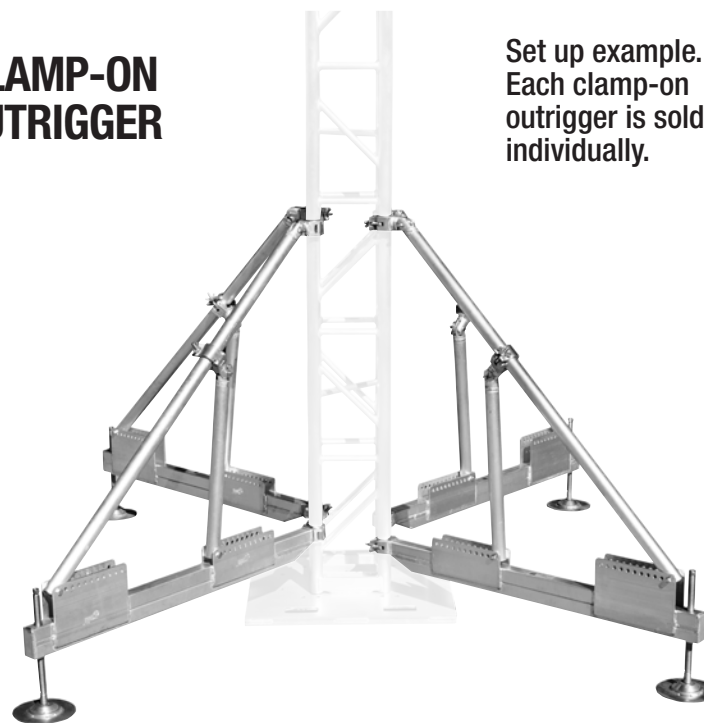
Show Solutions Aluminum Clamp-on Outrigger utilizes heavy - duty aluminum half couplers attach to any 2" chord of aluminum tower truss. The multi-position clamp adjustment allows you to position the clamps at the right place thus allowing you to swivel each leg into the perfect location on the ground.

The leveling screw jack allows you to adjust the leg securely to the perfect level.

- Strong lightweight double-braced aluminum construction
- Folds flat for easy space saving transport
- 50" Long
- Leveling screw jack

CLAMP-ON OUTRIGGER

Set up example.
Each clamp-on
outrigger is sold
individually.



Closed Position



PITCHED ROOF SYSTEM BRACE SETS

www.ShowSolutions.com

Our SP12RF16ANG and SP20RF16ANG Roof Systems includes a set of fixed angled braces for a 16° roof system using 12"x12" or 20.5" x 20.5" square truss beams, respectively. Each set includes (4) lower and (2) top braces.

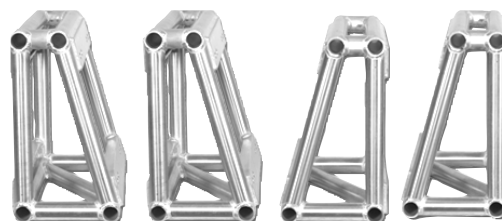
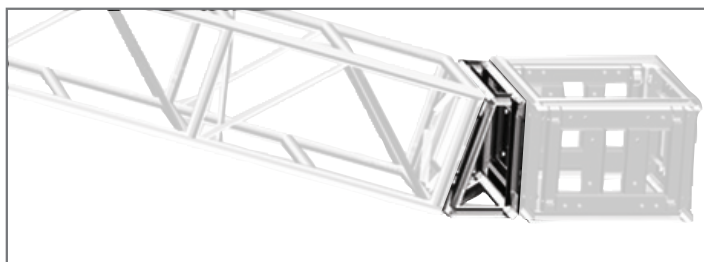
FEATURES

- Compatible with industry standard plated truss bolt pattern.
- 6061-T6 Brushed Aluminium Finish
- Connect to 45 degree blocks to make a 135 degree pitch



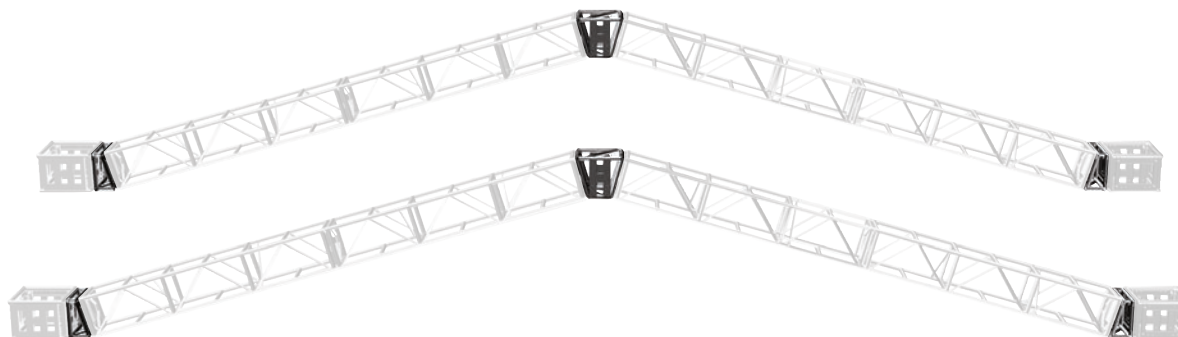
SKU	DESCRIPTION
SP20RF16ANG	20.5" x 20.5" Roof Package, 6 Braces (4 lower, 2 top) Truss not included

Top braces connect truss at the apex of the roof

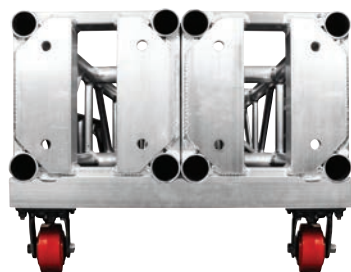


SKU	DESCRIPTION
SP12RT16ANG	12" x 12" Roof Package, 6 Braces (4 lower, 2 top) Truss not included

Lower braces connect roof truss to sleeve blocks



TRUSS STICKS AND SLEEVE BLOCKS ARE NOT INCLUDED
WITH ANGLE BRACES. SOLD SEPARATELY.

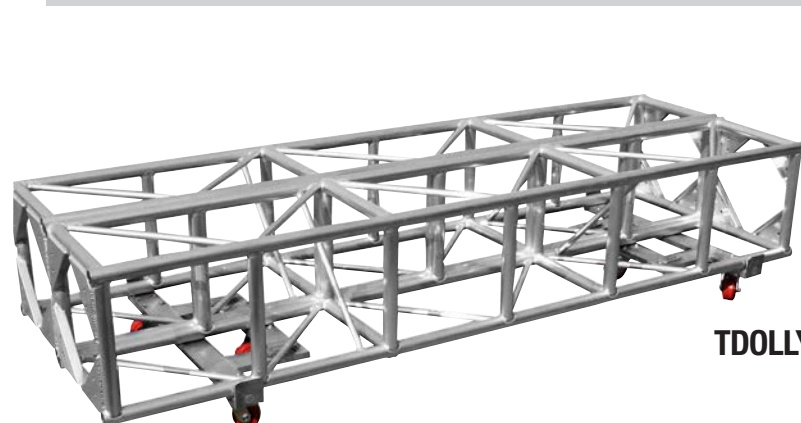
www.ShowSolutions.com


Front view 2 rows of 12"x12"


TDOLLY2C12X2

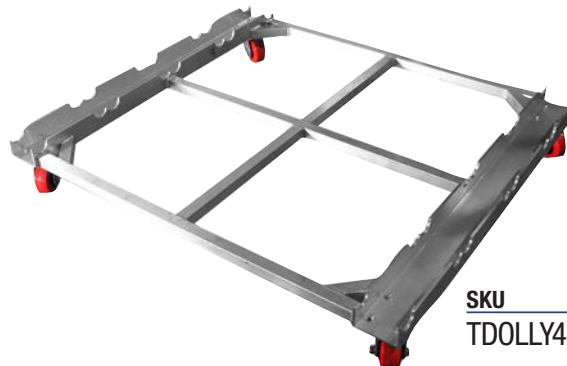
 Front view 1 row of
20.5"x20.5"


SKU	DESCRIPTION
TDOLLY2C12X2	Holds two 12"x12" Truss Sticks side by side or one 20.5" truss.
sold in pairs	


TDOLLY3C12X3


Built-in E-clip mount

SKU	DESCRIPTION
TDOLLY3C12X2	Holds 2 rows of 12"x12" Truss Sticks or 1 row of 20.5"x 20.5 Truss Sticks. SOLD IN PAIRS
TDOLLY3C12X3	Holds 3 rows of 12"x12" Truss Sticks or 2 rows of 20.5"x 20.5 Truss Sticks. SOLD IN PAIRS


TDOLLY4C12X4


SKU	DESCRIPTION
TDOLLY4C12X3	Holds 3 rows of 12"x12" Truss Sticks or 2 rows of 20.5"X 20.5 Truss Sticks
TDOLLY4C12X4	Holds 4 rows of 12"x12" Truss Sticks

HINGED BOOKS AND HINGED PLATES

12" x 12" AND 20.5" x 20.5"

www.ShowSolutions.com

HINGED BOOK

The SP Pro Series hinged books are made of 6061-T6 2" O.D. aluminum tube and bolted end plates that connects truss at your desired angle with a clean look. Available for both 12" or 20.5" box truss.

12"x 12" HINGED BOOK

FEATURES:

- Compatible with industry standard plated truss bolt pattern.
- 6061-T6 Aluminum Finish
- 2" Tubing



SKU	DESCRIPTION
SP12SGB	Hinged Book for 12"x12" Truss



SKU	DESCRIPTION
SP20SGB	Hinged Book for 20.5" x 20.5" Truss

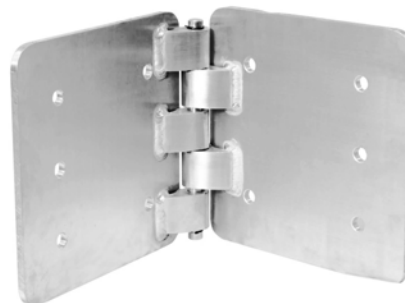
HINGED PLATES

Our SP PRO Series hinged plates are made of 10mm thick solid aluminum plate that connects truss at your desired angle with a clean look. Available for either 12" or 20.5" box truss.

12"x 12" HINGED PLATE

FEATURES:

- Compatible with industry standard plated truss bolt pattern.
- 6061-T6 Aluminum Finish
- 10mm Thick Aluminum Plate

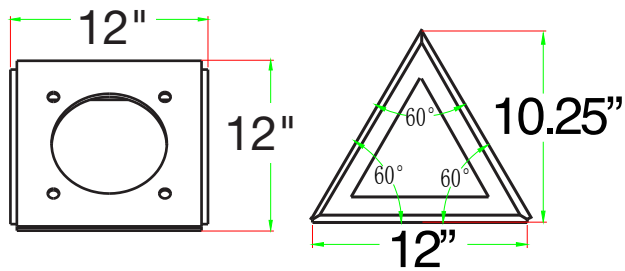


SKU	DESCRIPTION
SP12HP	Hinged Plate for 12"x12" Truss

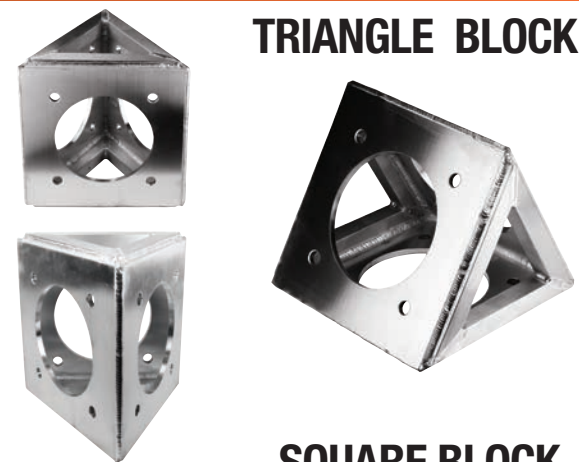
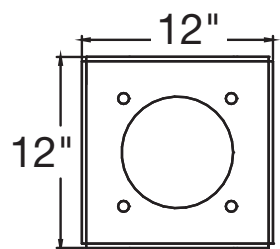


SKU	DESCRIPTION
SP20HP	Hinged Plate for 20.5" x 20.5" Truss

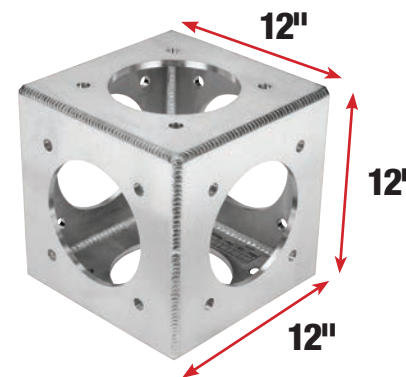
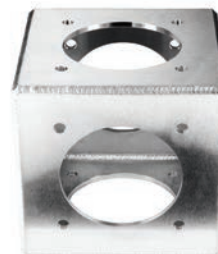
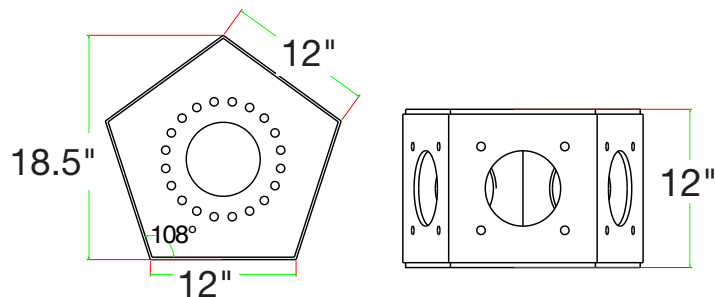
Our Designer Blocks are compatible with industry standard 12"x12" plated box truss. Each features Multi-Angle connecting plates for constructing creative structures for exhibition, entertainment, concert tour, theatrical staging and specialty applications. Expand your creative genius.



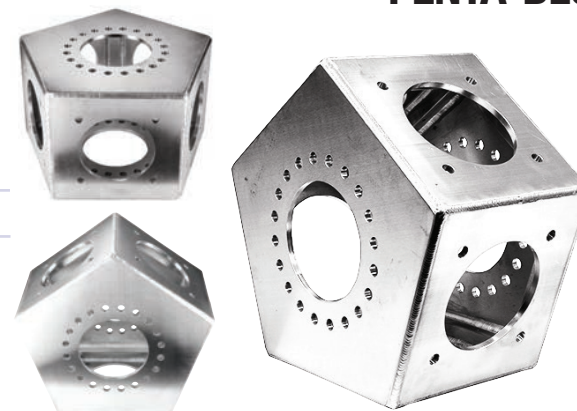
SKU	DESCRIPTION
DB12X3	(SP12T3X120) 3-WAY TRIANGLE BLOCK


TRIANGLE BLOCK


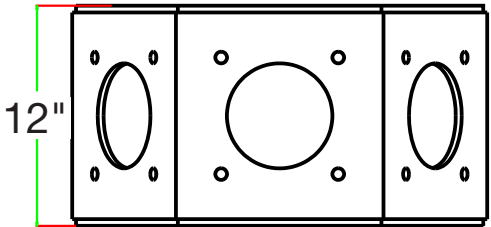
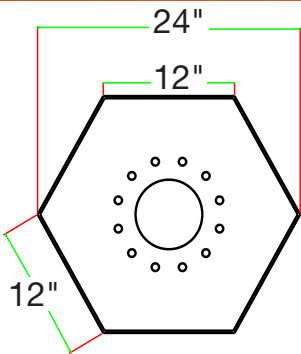
SKU	DESCRIPTION
SPPCB12126	6-way flush corner square block for 12" x 12" square trussing


SQUARE BLOCK


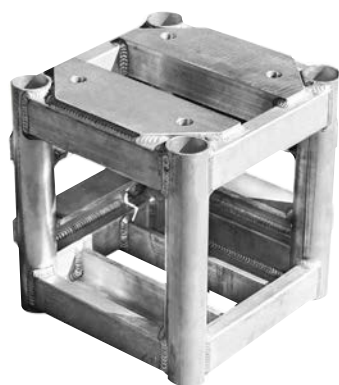
SKU	DESCRIPTION
DB12X5	5-WAY PENTA-BLOCK


PENTA-BLOCK

HEX-BLOCK

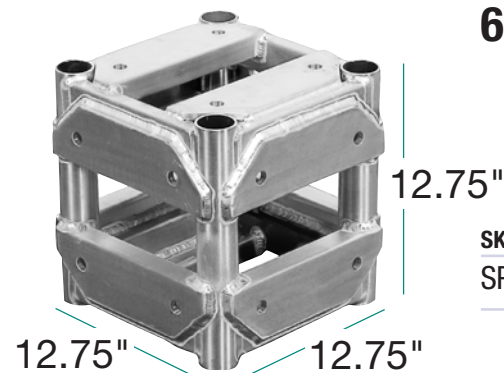


SKU	DESCRIPTION
DB12X6	6-WAY HEX-BLOCK



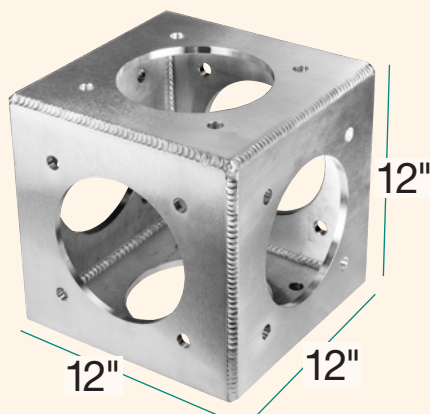
4 WAY CORNER BLOCK

SKU	DESCRIPTION
SP1201	4-way corner block



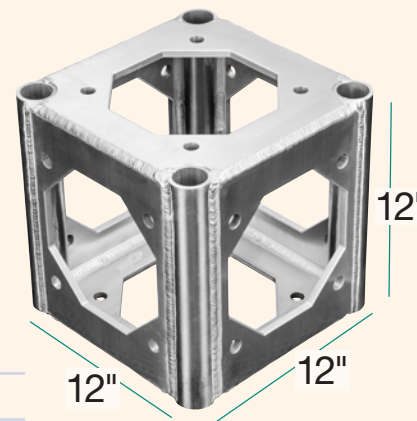
6 WAY CORNER BLOCK

SKU	DESCRIPTION
SP1200	6-way corner block



6 WAY CORNER BLOCK TRUE 12"x 12" x 12"

SKU	DESCRIPTION
SPPCB12126	6-way flush corner block



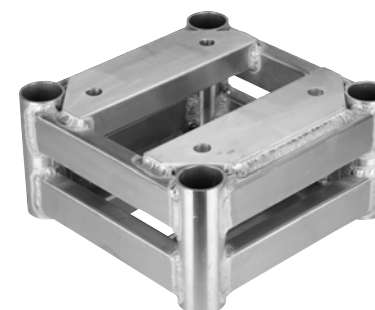
6 WAY CORNER BLOCK TRUE 12"x 12" x 12"

SKU	DESCRIPTION
SP121212	12" LONG 12" x 12" Block



2 WAY BLOCK FOR 12"x 12" square trussing

SKU	DESCRIPTION
SP1212	2-way block for 12"x 12" square trussing



12" X 12" SPACER 6", 10", 12"

SKU	DESCRIPTION
SP12006	6" LONG 12" x 12" Spacer
SP12010	10" LONG 12" x 12" Spacer

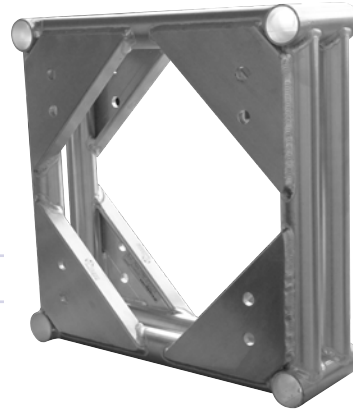
Our SP PRO 20.5" Corner Blocks & Spacers are made of 6061T-6 aluminum. They feature a 10mm thick solid aluminum end plates to securely connect trussing onto any side.

FEATURES:

- Compatible with industry standard plated truss bolt pattern.
- 6061-T6 Aluminum Finish

6" Spacer for 20.5" x 20.5"

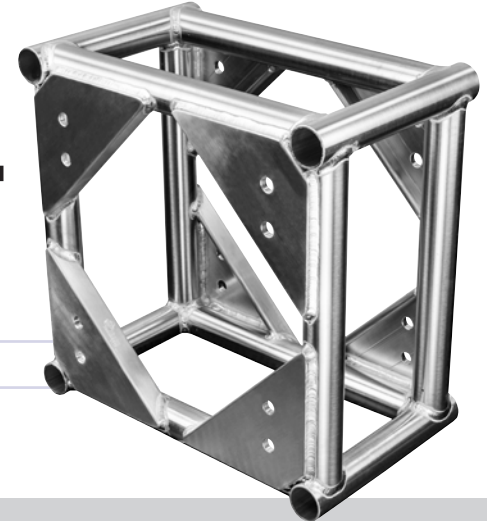
square truss spacer with bolts



SKU	DESCRIPTION
SP20006	6" long, 20.5" x 20.5" spacer

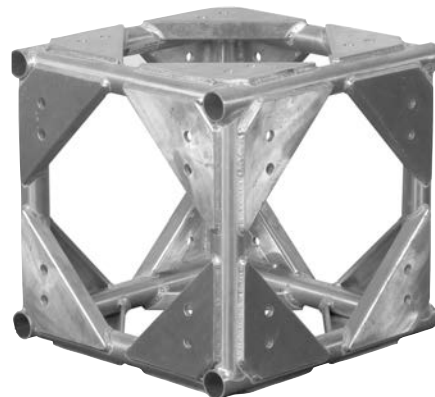
12" Spacer for 20.5" x 20.5"

square truss spacer with bolts



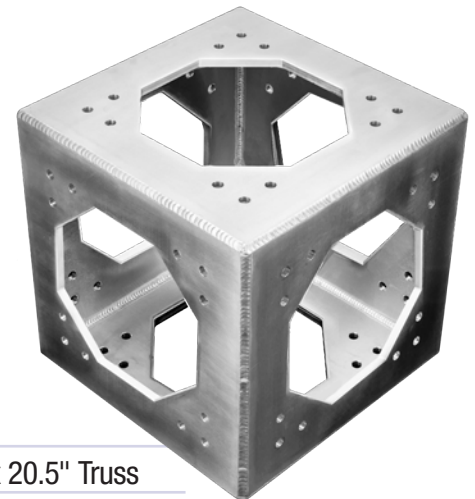
SKU	DESCRIPTION
SP20012	12" long 20.5" x 20.5" spacer

6 WAY CORNER BLOCK FOR 20.5"



SKU	DESCRIPTION
SP2000	6-Way corner block for 20.5" x 20.5" Truss

TRUE 20.5"x 20.5" x 20.5" BLOCK



SKU	DESCRIPTION
SP20200	6-Way corner block for 20.5" x 20.5" Truss

ANGLE BLOCKS

Our **12"x 12"** and **20.5"x 20.5"** angle blocks are an industry standard used by concert tours, production houses and large scale rigging companies. Available in 22.5° - 60°. We also specialize in Custom Angles.

FEATURES:

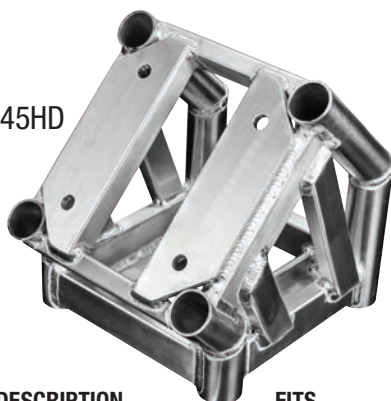
- Compatible with industry standard plated truss bolt pattern.

SP1222



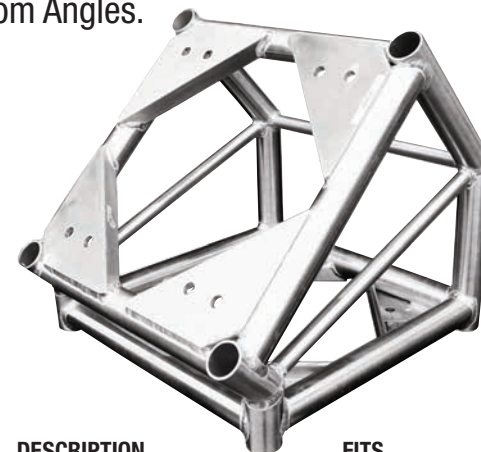
SKU	DESCRIPTION	FITS
SP1222	22.5 Degree Angle Block	12"x 12" Truss
SP1245	45 Degree Angle Block	12"x 12" Truss

SP1245HD



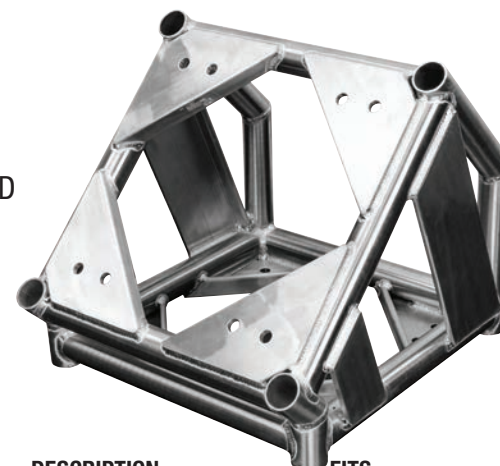
SKU	DESCRIPTION	FITS
SP1222HD	Heavy-Duty 22.5 Degree Angle Block	12"x 12" Truss
SP1245HD	Heavy-Duty 45 Degree Angle Block	12"x 12" Truss

SP2045



SKU	DESCRIPTION	FITS
SP2045	45 Degree Angle Block	20.5"x 20.5" Truss

SP2045HD

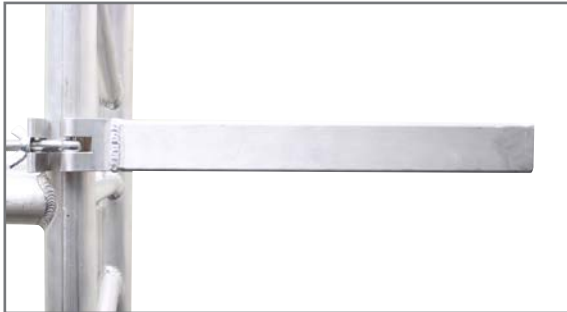


SKU	DESCRIPTION	FITS
SP2022HD	Heavy-Duty 22.5 Degree Angle Block	20.5"x 20.5" Truss
SP2045HD	Heavy-Duty 45 Degree Angle Block	20.5"x 20.5" Truss

SIDE SUPPORT ARMS

www.ShowSolutions.com

CS-C125016B



16" Square
Side Arm
with 2" Half
Coupler

SKU	DESCRIPTION
CS-C125016B	16" Long Square Side Arm with 2" Half Coupler

CS-C125026B

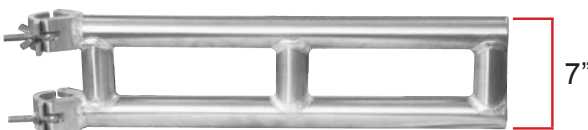


26" Long
Side Arm
with 2" Half
Coupler

SKU	DESCRIPTION
CS-C125026B	26" Long Side Arm with 2" Half Coupler 2" O.D. Tube

Our Side Arms are made of heavy-duty aluminum tube and designed for a variety of applications including hanging speakers, lights, props, and much more. Arms feature permanently welded 2" Pro Couplers ensuring a secure attachment to trussing.

CS-C125026BX2A



7"



PRO 2" Half
Couplers with
26" I-Beam
Truss 2" O.D.
Main Tube.

SKU	DESCRIPTION
CS-C125026BX2A	26" I-Beam Side Arm (2" O.D.) with 2" Half Coupler

CS-C125026BX2B



7"



PRO 2" Half
Couplers with
26" I-Beam Truss
with
1" diagonal 2" O.D.
Main Tube.

SKU	DESCRIPTION
CS-C125026BX2B	26" I-Beam Side Arm (2" O.D.) with Diagonal Supports and 2" Half Coupler

Show Solutions Trussmounts are the perfect setup solution for moving heads, special effects, lekos, and projectors, just a few examples that can be suspended from these ingenious rigging accessories. Top mounts may be bolted on either 12" x 12" or 290mm x 290mm Truss. Your choice of 12", 24", 36", 48" and 60" tube length in 2" O.D. x 1/4" wall thickness.



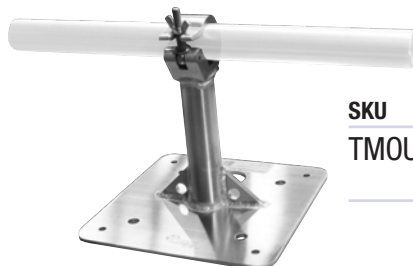
SINGLE WELDED STAND

SKU	DESCRIPTION
TMOUNT - B1-12	SINGLE STAND 12" LONG BAR
TMOUNT - B1-24	SINGLE STAND 24" LONG BAR
TMOUNT - B1-36	SINGLE STAND 36" LONG BAR
TMOUNT - B1-48	SINGLE STAND 48" LONG BAR



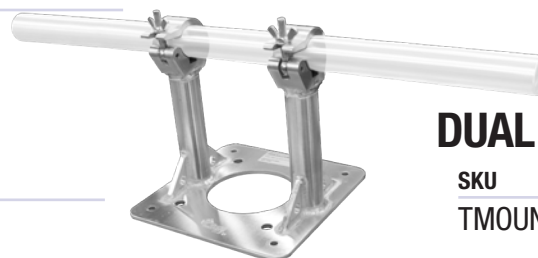
DUAL WELDED STAND

SKU	DESCRIPTION
TMOUNT - B2-24	DUAL STAND 24" LONG BAR
TMOUNT - B2-36	DUAL STAND 36" LONG BAR
TMOUNT - B2-48	DUAL STAND 48" LONG BAR
TMOUNT - B2-60	DUAL STAND 60" LONG BAR



SINGLE CLAMP

SKU	DESCRIPTION
TMOUNT - C1	SINGLE CLAMP (TUBE SOLD SEPARATELY)



DUAL CLAMP

SKU	DESCRIPTION
TMOUNT - C2	DUAL CLAMP (TUBE SOLD SEPARATELY)



HALF COUPLER PLATE SINGLE TUBE

MODEL	DESCRIPTION
SPCP12	DOUBLE TUBE 12"X 12" PLATE W/2" O.D. HALF COUPLERS AT 90° 12mm THICK ALUMINUM PLATE

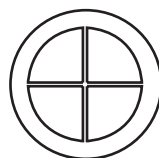


HALF COUPLER PLATE DOUBLE TUBE

MODEL	DESCRIPTION
SPCP12TUB	SINGLE TUBE 12"X 12" PLATE W/ 2" O.D. HALF COUPLERS 12mm THICK ALUMINUM PLATE



2" O.D. x 1/4"
WALL THICKNESS



Internal stiffeners to
increase load capacity.

MODEL	DESCRIPTION
TMOUNTBAR - 2-12	2" O.D. x 1/4" WALL THICKNESS, 12" LONG
TMOUNTBAR - 2-24	2" O.D. x 1/4" WALL THICKNESS, 24" LONG
TMOUNTBAR - 2-36	2" O.D. x 1/4" WALL THICKNESS, 36" LONG
TMOUNTBAR - 2-48	2" O.D. x 1/4" WALL THICKNESS, 48" LONG
TMOUNTBAR - 2-60	2" O.D. x 1/4" WALL THICKNESS, 60" LONG

TRUSSMOUNT WAGON WHEEL

12", 290mm & 20.5" TRUSS

Our Wagon Wheel is an excellent way to utilize the extra space on the tops or sides of truss setups to mount lighting fixtures, projectors or other items like decorative props & drapes.

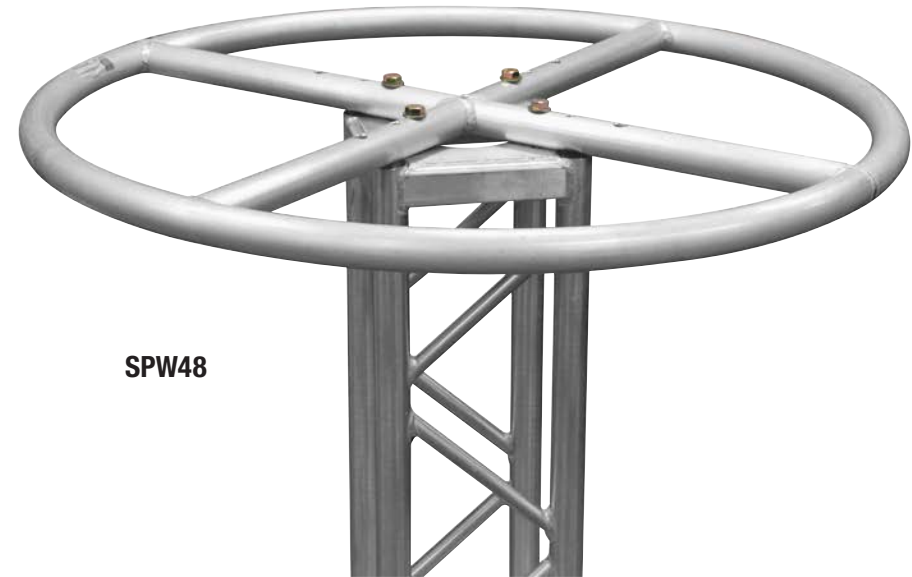
Features:

- 6061-T6 Aluminum Finish
- 2" O.D. x 1/8"

Hole Pattern:

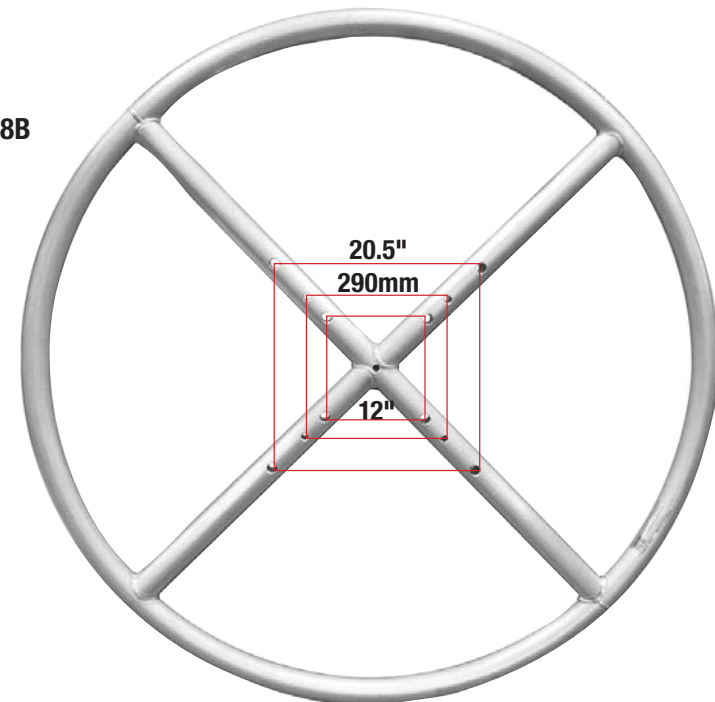
- 12" x 12"
- 290mm x 290mm
- 20.5" x 20.5"

SKU	DESCRIPTION
SPW48	WAGON WHEEL FOR 12", 290mm AND 20.5" BOX TRUSS



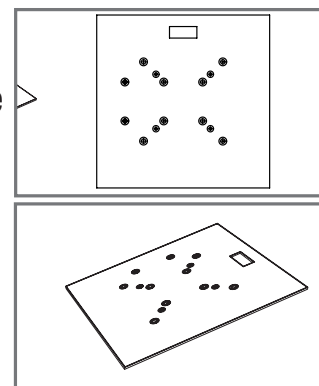
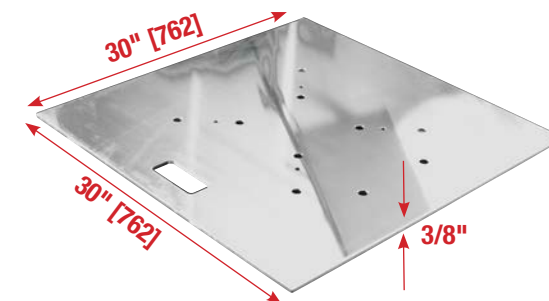
SPW48

48"
SPW48B



The PB-H1200FP Base Plate measures **30" x 30"**, 3/8" thick aluminum plate. Made specifically for 12", 290mm and 20.5" box truss. All holes are counter sunk for flush bolt mounting, and it also has one cut out handle.

SKU	DESCRIPTION	WEIGHT
PBH1200FP	30" x 30" Base Plate for 12" x 12" truss & 20.5" x 20.5"	31.5 lbs.


FLAT PLATE


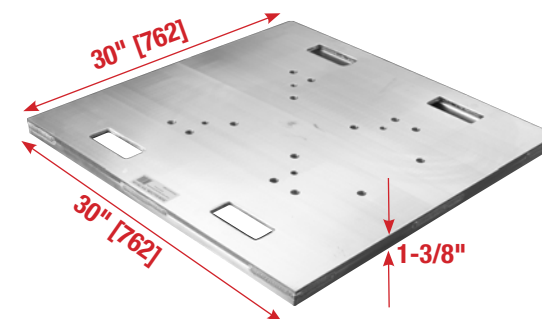
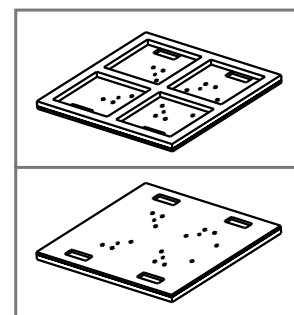
RAISED PLATES

The PB-H1200 Heavy Duty Base Plate is a **30" x 30"** all-aluminum 1-1/2" raised base plate for any job indoors or out. It is designed to mount most 12", 290mm, 20.5" box truss sizes and also features offset hole patterns for balancing of 12" box truss when used to hang and support large flat screen monitors in a single column configuration. Large handle cut outs on both sides make it easier to pick up and move.

FEATURES

- 6061-T6 Brushed Aluminum Finish
- 1/2" Thick Aluminum Top Plate
- 1" Thick Aluminum Frame

SKU	DESCRIPTION	WEIGHT
PBH1200	30" x 30" Heavy-Duty Aluminum Base Plate for 12" x 12" & 20.5" x 20.5" truss	53 lbs

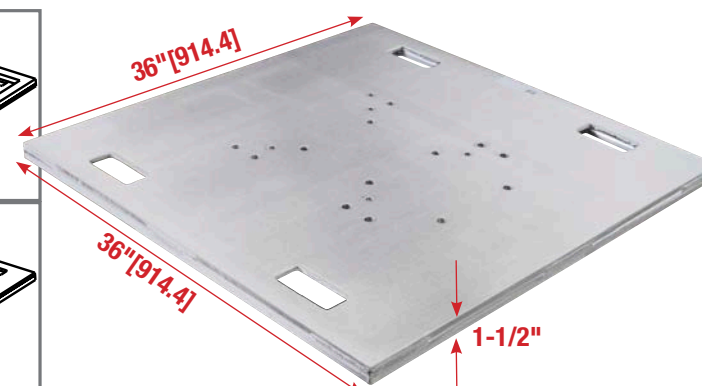
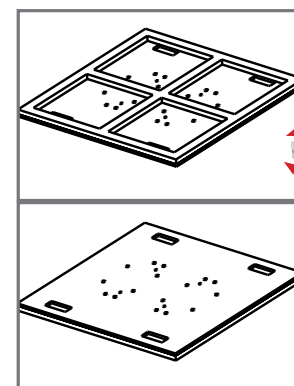
RAISED PLATE


The PB-H1236 Heavy Duty Base Plate measures **36" x 36"** and is identical to the PB-H1200 except for a larger foot print.

FEATURES

- 6061-T6 Brushed Aluminum Finish
- 1/2" Thick Aluminum Top Plate
- 1" Thick Aluminum Frame

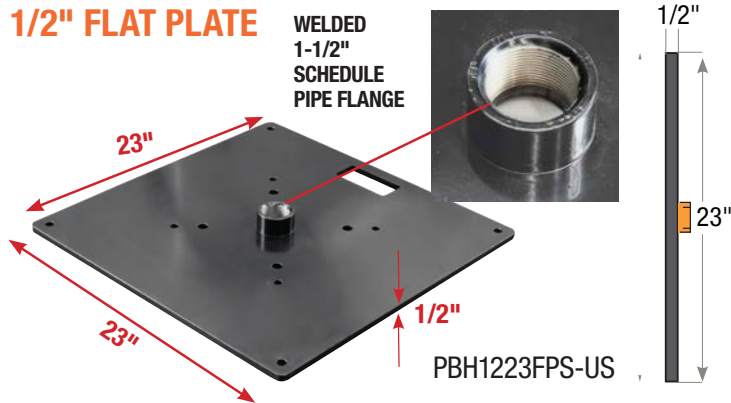
SKU	DESCRIPTION	WEIGHT
PBH1236	36" x 36" Heavy-Duty Aluminum Base Plate for 12 x 12", 290mm x 290mm & 20.5" x 20.5" truss	75 lbs
PBH1248	48" x 48" Heavy-Duty Aluminum Base Plate for 12 x 12", 290mm x 290mm & 20.5" x 20.5" truss	129 lbs

RAISED PLATE


BASE PLATES -STEEL WITH WELDED 1-1/2" SCHEDULE 40 FLANGE

www.ShowSolutions.com

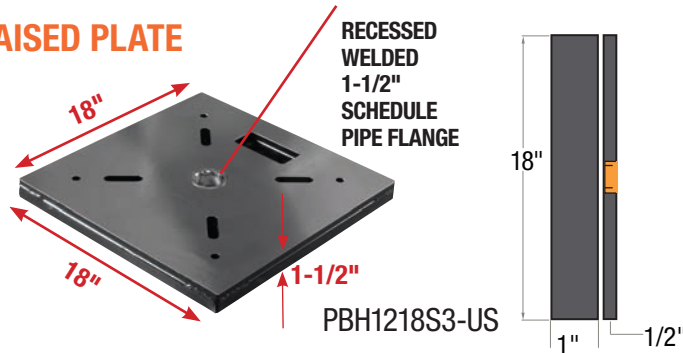
1/2" FLAT PLATE



Exclusively designed and engineered with hole patterns for 12", 20-1/2", 290mm box truss and 1-1/2" schedule 40 adapter. Black powder coat finish. Custom Color Available. Handle Cut Out.

SKU	DESCRIPTION	WEIGHT
PBH1223FPS-US	23"x 23"x 1/2" Pro Steel Base Plate, Flat with Raised Flange	73 lbs

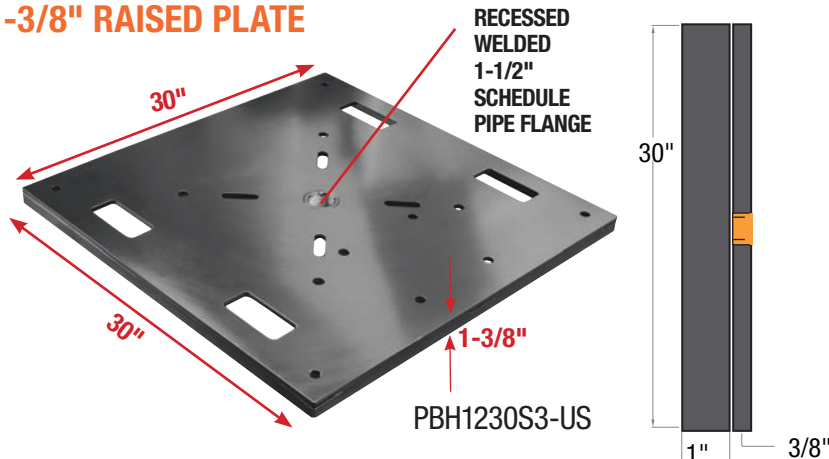
1-1/2" RAISED PLATE



Exclusively designed and engineered with hole patterns for 12", 290mm box truss and welded recessed 1-1/2" schedule 40 adapter. Black powder coat finish. Custom Color Available. Handle cut out.

SKU	DESCRIPTION	WEIGHT
PBH1218S3-US	18" x 18" Pro Steel Base Plate, Raised with Recessed Flange	50 lbs

1-3/8" RAISED PLATE

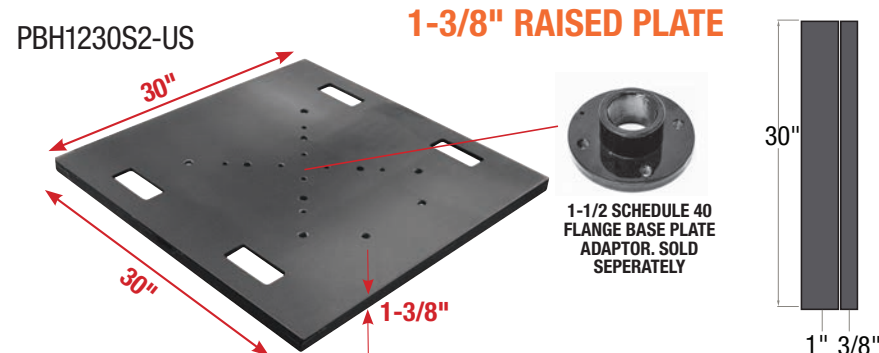


PBH1230S3-US heavy-duty base plate measures 30"x 30" and with hole patterns for 12, 290mm, 20.5" and welded-recessed schedule 40 adaptor. Black powder coat finish. Handle cut out.

SKU	DESCRIPTION	WEIGHT
PBH1230S3-US	30" x 30" Pro Steel Base Plate, Flat with Recessed Flange. 4 Handle cut outs	96 lbs

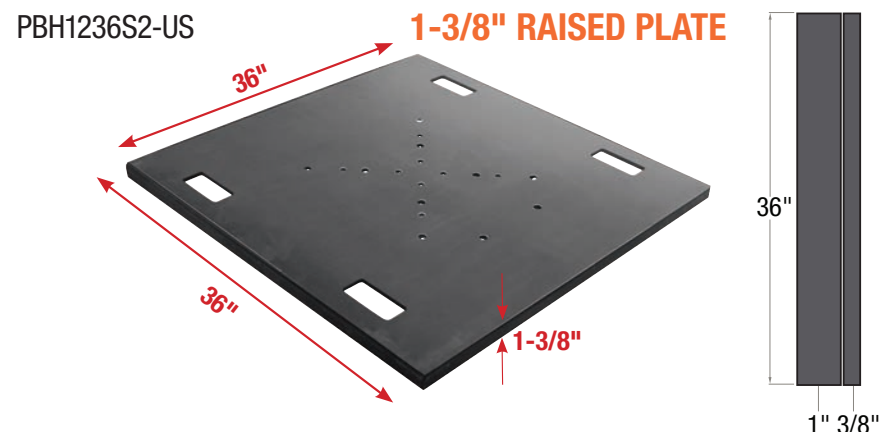
The PBH1230S2-US Steel Base Plate is a 30"x30" base plate for any job indoors or out. Large handle cut outs on both sides make it easier to pick up and move. Powder coated in black finish.

SKU	DESCRIPTION	WEIGHT
PBH1230S2-US	30" x 30" Raised Steel Base Plate with hole patterns for 12", 20-1/2", 290mm box = truss and 1-1/2" schedule 40 flange mounting holes	96 lbs



The PBH1236S2-US steel base plate is s a 36"x36" with hole patterns for 12" 290mm, 20"-1 1/2 & schedule 40 flange mounting holes.

SKU	DESCRIPTION	WEIGHT
PBH1236S2-US	36"x36"x1-3/8" Pro Steel Base	148 lbs

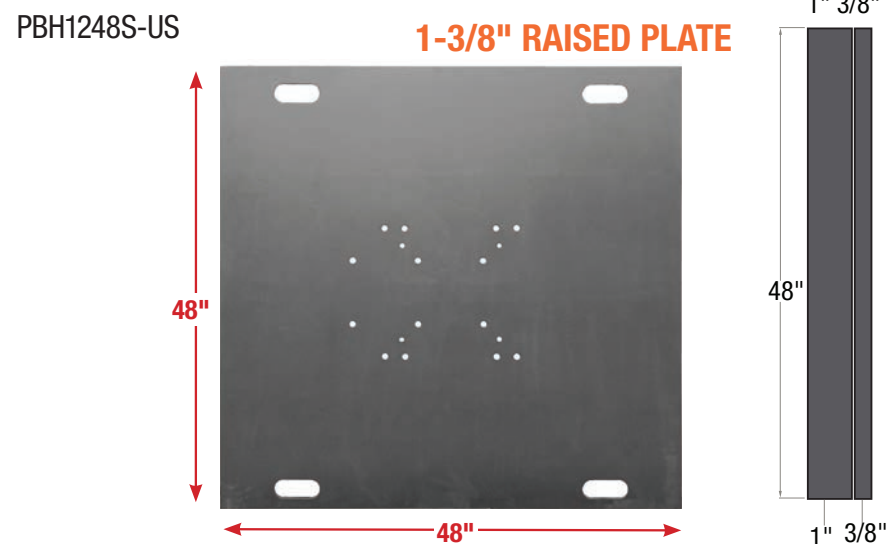


The PBH1248S-US Steel Base Plate is a 48" x 48" beast to be reckoned with. It features (4) handle cut outs and multiple bolt pattern countersunk holes for mounting various truss sizes. The perfect base plate for the ultimate BIG job.

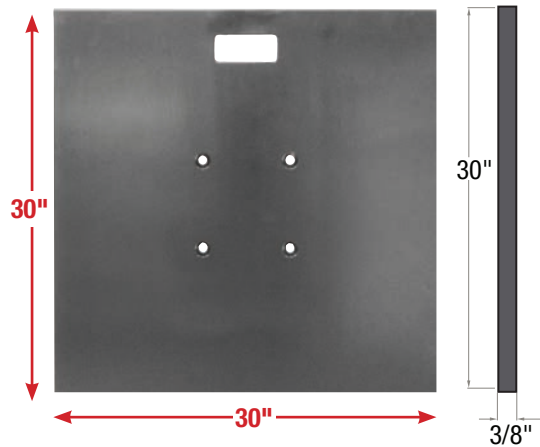
FEATURES

- Powder Coated Black Gloss Finish
- 3/8" Thick Solid Steel
- 1" Steel frame

SKU	DESCRIPTION	WEIGHT
PBH1248S	48" x 48" Steel Base Plate for 12" or 20.5" Square Truss	240 lbs



3/8" FLAT 30"x 30"

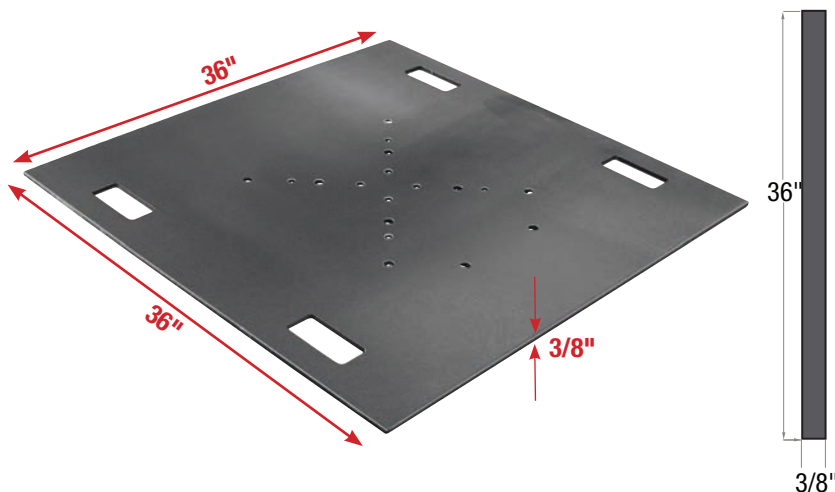


30x30 FLAT STEEL BASE PLATE

The PBH1200FPS 30 x 30 Steel Base Plate measures 30" x 30" with 4 countersunk holes for mounting 12" box truss. The steel base plate is ideal for in & outdoor applications. Powder coated in a black finish.

SKU	DESCRIPTION	WEIGHT
PBH1200FPS	30" X 30" 3/8" Base Plate for 12" x 12" truss only	96 lbs

3/8" FLAT 36"x 36"

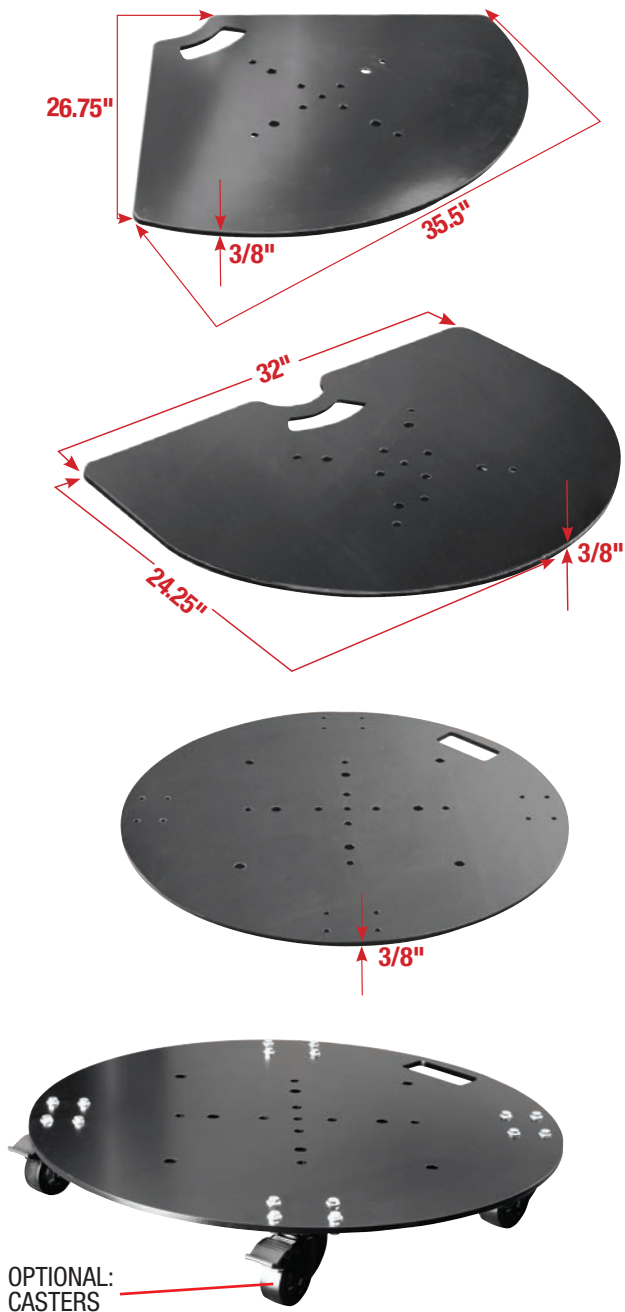


30x30 FLAT STEEL BASE PLATE

The PBH1236FPS2-US 36"x 36" steel base plate measures 36"x 36".

Exclusively designed and engineered with counter sunk hole patterns for the 12", 20-1/2", 290mm box truss and 1-1/2" schedule 40 flange Mounting holes, Black powder coat finish. Custom Color Available.

SKU	DESCRIPTION	WEIGHT
PBH1236FPS2-US	36"x 36"x 3/8" Pro Steel Base Plate, Flat with Flange Mounting Holes	131.5 lbs



FLUSH CORNER BASE PLATES

Exclusively designed and engineered for 12", 20-1/2", 290mm box truss and 1-1/2" schedule 40 flange adapters. Black powder coat finish.

SKU	DESCRIPTION	WEIGHT	THICKNESS
PBHC27RSB	For 12", 20.5", and 290mm box truss.	63 lbs	3/8 Thick

FLUSH WALL BASE PLATES

SKU	DESCRIPTION	WEIGHT	THICKNESS
PBHW24RSB	For 12", 20.5", and 290mm box truss.	67 lbs	3/8 Thick

30" DIAMETER BASE PLATES

SKU	DESCRIPTION	WEIGHT	THICKNESS
PBH30DSB	For 12", 20.5", and 290mm box truss.	71.5 lbs	3/8 Thick
PBH30DSB-wheels	For 12", 20.5", and 290mm box truss with wheels	79 lbs	3/8 Thick

OPTIONAL

PBH-30DSBW
Pro Steel Circular Base Plate with
3" Caster w/Brakes,
Black: 30" Diameter, 3/8" Thick

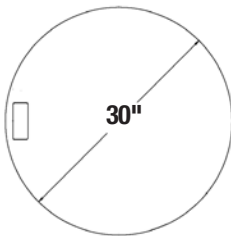
CASTERS OPTIONAL



**1-1/2 SCHEDULE 40
FLANGE BASE PLATE
ADAPTOR**



FLANGE OPTIONAL



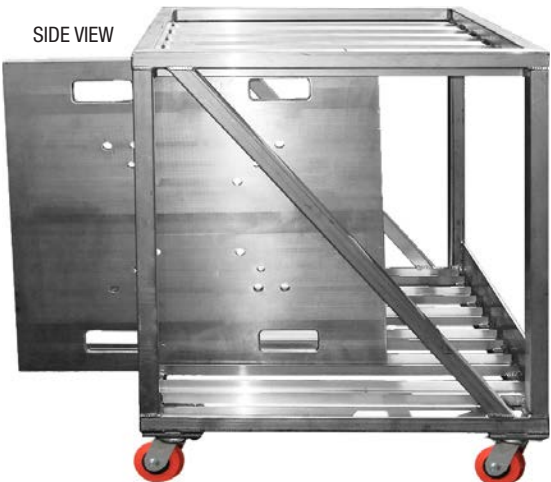


PBH1236WC6

Our base plate carts are a must have for touring, production & rental companies. These aluminum carts are available in 3 different sizes for 30"/36"/48" squared base plates. Base Plates available but sold seperately.

SKU	DESCRIPTION
PBH1200WC8	Holds up to 8, 30" x 30" Base Plates
PBH1236WC6	Holds up to 6, 36" x 36" Base Plates
PBH1248WC4	Holds up to 4, 48" x 48" Aluminum Base Plates

**36"X36"
BASE PLATE CART**
BASE PLATES NOT INCLUDED



SIDE VIEW



PBH1200WC8
FRONT VIEW

**30"x 30"
BASE PLATE CART**
BASE PLATES SOLD SEPERATLEY



PBH1248WC4
BACK VIEW

**48"x 48"
BASE PLATE CART**

www.ShowSolutions.com

SAFETY CABLE

Essential for safe lighting installation, mobile setups, and rigging.
Choose from our variety of lengths and thicknesses that best fit your needs.



LASC2BLK
WITH STANDARD SIZE SPRING HOOK
30" LONG, 0.12"(3MM) THICK



LASC1
WITH STANDARD SIZE SPRING HOOK
20" LONG, 0.12"(3MM), THICK



LASC303
WITH SMALL SIZE SPRING HOOK
30"(760MM) LONG, 0.12"(3MM) THICK



LASC2
WITH STANDARD SIZE SPRING HOOK
30" LONG, 0.12"(3MM), THICK



LASC304
WITH SMALL SIZE SPRING HOOK
30"(760MM) LONG, 0.16"(4MM) THICK



LASC3
HEAVY-DUTY SAFETY CABLE
WITH EXTRA LARGE SIZE SPRING HOOK
18" LONG, 0.2"(5MM), THICK

www.ShowSolutions.com



MINI HALF COUPLERS FOR 3/4" - 7/8" TUBE

SKU	FINISH	WORKING LOAD	
LAC25XS	Polished	60 kg	130 lbs
LAC25XSB	Black	60 kg	130 lbs
LAC25XSW	White	60 kg	130 lbs



SMALL HALF COUPLERS FOR 1" TUBE

SKU	FINISH	WORKING LOAD	
LAC25S	Polished	60 kg	130 lbs
LAC25SB	Black	60 kg	130 lbs
LAC25SW	White	60 kg	130 lbs



SLIM HALF COUPLERS FOR 2" TUBE

SKU	FINISH	WORKING LOAD	
LACMS30	Polished	75 kg	165 lbs
LACQ30B	Black	75 kg	165 lbs



SLIM HALF COUPLERS WITH LARGE WING NUT FOR 2" TUBE

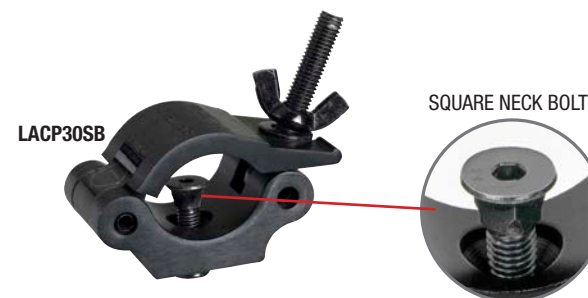
SKU	FINISH	WORKING LOAD	
LACML30	Polished	75 kg	165 lbs
LACML30B	Black	75 kg	165 lbs

HALF COUPLERS STANDARD FOR 2" TUBE



SKU	FINISH TYPE	BOLT LOAD	WORKING	
LACP50R	Polished	Round Neck Bolt	500 kg	1100 lbs
LACP50RB	Black	Round Neck Bolt	500 kg	1100 lbs
LACP50S	Polished	Square Neck Bolt	500 kg	1100 lbs
LACP50SB	Black	Square Neck Bolt	500 kg	1100 lbs
LACP50L	Polished	Large Wing Nut	500 kg	1100 lbs

NARROW HALF COUPLERS FOR 2" TUBE



SKU	FINISH TYPE	BOLT LOAD	WORKING	
LACP30R	Polished	Round Neck Bolt	300 kg	660 lbs
LACP30RB	Black	Round Neck Bolt	300 kg	660 lbs
LACP30S	Polished	Square Neck Bolt	300 kg	660 lbs
LACP30SB	Black	Square Neck Bolt	300 kg	660 lbs

MINI SWIVEL COUPLERS FOR 3/4" - 7/8" TUBES

SKU	FINISH	WORKING LOAD	
LACSD25XS	Polished	60 kg	130 lbs
LACSD25XSB	Black	60 kg	130 lbs
LACSD25XSW	White	60 kg	130 lbs



SMALL SWIVEL COUPLERS FOR 1" TUBE

SKU	FINISH	WORKING LOAD	
LACSD25S	Polished	60 kg	130 lbs
LACSD25SB	Black	60 kg	130 lbs
LACSD25SW	White	60 kg	130 lbs



SWIVEL COUPLERS FOR 2" TUBE

SKU	FINISH	WORKING LOAD	
LACSDP50	Polished	500 kg	1100 lbs
LACSDP50B	Black	500 kg	1100 lbs



NARROW SWIVEL COUPLERS FOR 2" TUBE

SKU	FINISH	WORKING LOAD	
LACSDP30	Polished	300 kg	660 lbs
LACSDP30B	Black	300 kg	660 lbs



MINI HALF COUPLER WITH EYE BOLT FOR 3/4" - 7/8" TUBES

SKU	FINISH	WORKING LOAD	
LACE25XS	Polished	60 kg	130 lbs
LACE25XSB	Black	60 kg	130 lbs
LACE25XSW	White	60 kg	130 lbs



SMALL HALF COUPLER WITH EYE BOLT FOR 1" TUBE

SKU	FINISH	WORKING LOAD	
LACE25S	Polished	60 kg	130 lbs
LACE25SB	Black	60 kg	130 lbs
LACE25SW	White	60 kg	130 lbs



HALF COUPLER WITH EYE BOLT FOR 2" TUBE

SKU	FINISH LOAD	WORKING	
LACPE50	Polished	500 kg	1100 lbs
LACPE50B	Black	500 kg	1100 lbs

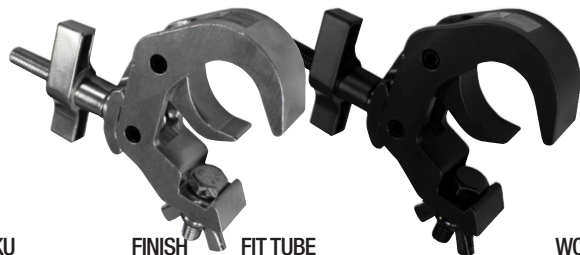


NARROW HALF COUPLER WITH EYE BOLT FOR 2" TUBE

SKU	FINISH LOAD	WORKING	
LACPE30	Polished	300 kg	660 lbs
LACPE30B	Black	300 kg	660 lbs



QUICK RIG PRO CLAMPS



SKU	FINISH	FIT TUBE O.D. SIZE	WORKING LOAD
LACQ30	Polished	38mm - 51mm / 1.5" - 2"	150 kg / 330 lbs
LACQ30B	Black	38mm - 51mm / 1.5" - 2"	150 kg / 330 lbs

TRIGGER PRO CLAMPS



SKU	FINISH	FIT TUBE O.D. SIZE	WORKING LOAD
LACT28	Polished	38 mm - 51mm / 1.5" - 2"	150 kg / 330 lbs
LACT28B	Black	38 mm - 51mm / 1.5" - 2"	150 kg / 330 lbs

C - CLAMP



SKU	FINISH	FIT TUBE O.D. SIZE	WORKING LOAD
LAC28	Polished	38mm - 51mm / 1.5" - 2"	100 kg / 220 lbs

G - CLAMP



SKU	FINISH	FIT TUBE O.D. SIZE	WORKING LOAD
LACP	Polished	25mm - 51mm / 1"-2"	200 kg / 440 lbs
LACPB	Black	25mm - 51mm / 1"-2"	200 kg / 440 lbs

MINI C - CLAMPS



SKU	FINISH	FIT TUBE O.D. SIZE	WORKING LOAD
LACM	Polished	Up To 2"	75 lbs
LACMB	Black	Up To 2"	75 lbs

C - CLAMP - STEEL



SKU	FINISH	FIT TUBE O.D. SIZE	WORKING LOAD
LACC	Black	Up To 2"	110 lbs

1-1/2" - 2" O-CLAMP



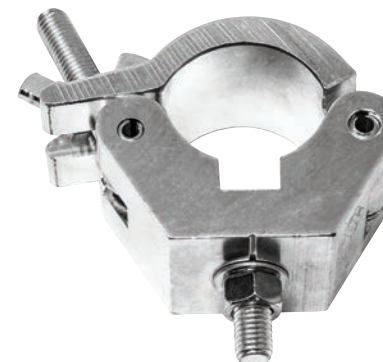
SKU	FINISH	FITS TUBE O.D. SIZE
LAC02	Black Plastic	1-1/2" & 2"

HALF COUPLER MEDIUM DUTY **MD**



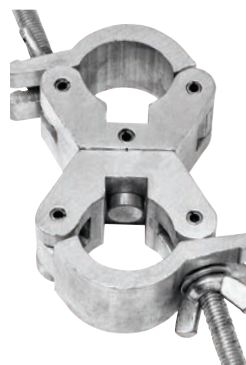
SKU	FINISH	FITS TUBE O.D. SIZE
CSC1201	Polished	1-1/8"

HALF COUPLER HEAVY DUTY **HD**



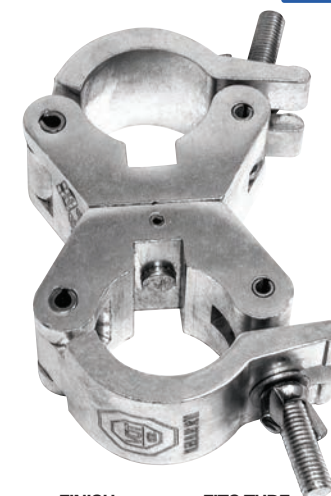
SKU	FINISH	FITS TUBE O.D. SIZE
CSC120050	Polish	2"

SWIVEL COUPLER MEDIUM DUTY **MD**



SKU	FINISH	FITS TUBE O.D. SIZE
CSC1202	Polished	1-1/8"

SWIVEL COUPLER HEAVY DUTY **HD**



SKU	FINISH	FITS TUBE O.D. SIZE
CSC122050	Polished	2"

www.ShowSolutions.com



GRIP BLOKS

SKU	DESCRIPTION
GRIPBLOK12	12" Truss Grip Blok
GRIPBLOK20	20.5" Truss Grip Blok



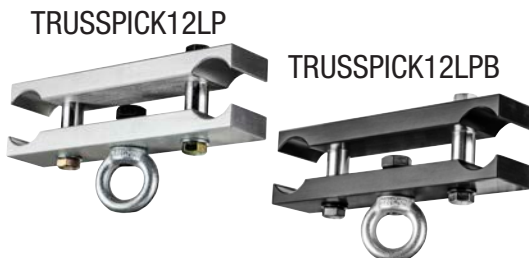
GRIP BLOKS

SKU	DESCRIPTION
GRIPBLOK12BLK	12" Truss Grip Blok in Black
GRIPBLOK20BLK	20.5" Truss Grip Blok in Black

GRIP BLOKS

GRIP BLOKS™ AND TRUSS PICKS
 Our solid aluminum Grip Bloks™ and truss picks are essential tools for pro rigging and are compatible with virtually all industry standard trussing. Available in two sizes for 12" and 20.5" truss, in natural aluminum and black.

LOW PROFILE 12" AND 20.5" TRUSS PICKS



TRUSS PICKS

SKU	DESCRIPTION
TRUSSPICK12LP	12" Low Profile Truss Picks
TRUSSPICK12LPB	12" Low Profile Truss Picks in Black

LOAD CAPACITY BASED ON FOLLOWING EYE BOLTS

M20- 2300 lbs

M16- 1500 lbs

M12- 725 lbs

SKU	DESCRIPTION
TRUSSPICK20LP	20.5" Low Profile Truss Picks
TRUSSPICK20LPB	20.5" Low Profile Truss Picks in Black

LOAD CAPACITY BASED ON FOLLOWING EYE BOLTS

M20- 1248 lbs

M16- 1400 lbs

M12- 725 lbs

HEAVY DUTY 20.5" TRUSS PICKS

TRUSSPICK20HDB

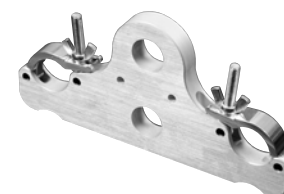


HEAVY DUTY 12" TRUSS PICKS

TRUSSPICK12HDB



TRUSSPICK12HD



TRUSS PICKS

SKU	DESCRIPTION
TRUSSPICK12HD	12" Truss Pick
TRUSSPICK12HDB	12" Truss Pick in Black
TRUSSPICK20HD	20.5" Truss Pick
TRUSSPICK20HDB	20.5" Truss Pick in Black

TRUSS PICKS

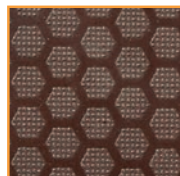
TRUSSPICK20HD



Exclusive Truss Cradle Design



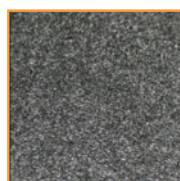
DD-4848H
48" x 48" Hard Deck

Hard Surface
Industrial Board

DD-484808R
48" x 48" Riser, 8" High

Our Duro Deck Stage System is easy to set up and store. Decks are available in two finishes. Hard Surfaces (Industrial Board) and charcoal color carpeted surface. The two available sizes (24" x 48", 48" x 48") and can be set up with any of the available four heights of collapsible risers (8", 16", 24" or 32").

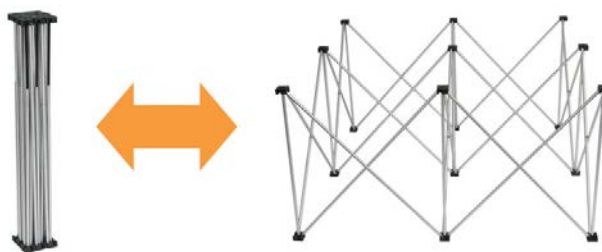
Duro Decks can be connected and locked together for small or large staging setups.

SKU	DESCRIPTION
DD-4824H	48" x 24" Hard Surface Deck
DD-4848H	48" x 48" Hard Surface Deck
DD-4824C	48" x 24" Carpeted Surface Deck
DD-4848C	48" x 48" Carpeted Surface Deck

DD-4848C
48" x 48" Carpeted Deck

Carpeted Surface

Retractable / Expandable compact design

(48" X 24" DECKS SOLD SEPARATELY)



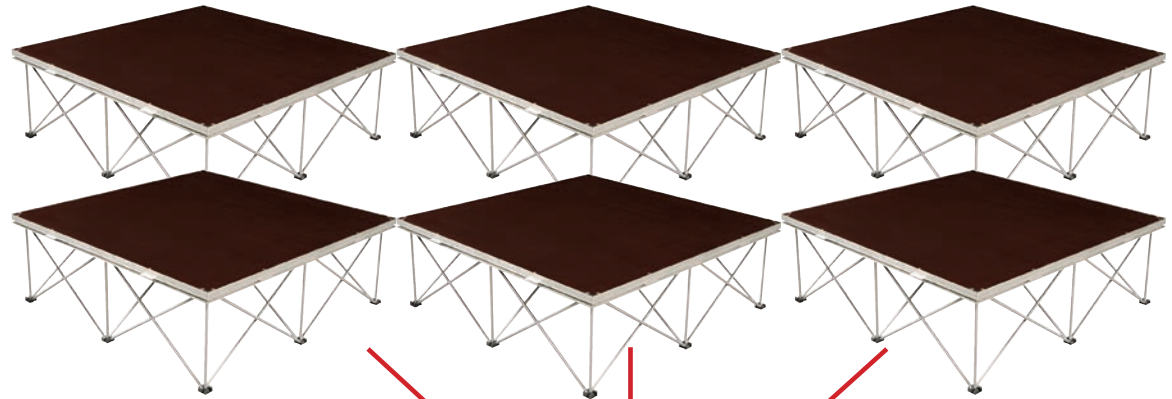
The Duro Deck collapsible risers are lightweight and compact, taking up very little space when stored away. Fully expand each collapsible riser and place the Duro Deck stage platform on top for simple, fast setup.

SKU	DESCRIPTION
DD-482408R	8" High, 48" x 24" Riser
DD-482416R	16" High, 48" x 24" Riser
DD-482424R	24" High, 48" x 24" Riser
DD-482432R	32" High, 48" x 24" Riser
DD-484808R	8" High, 48" x 48" Riser
DD-484816R	16" High, 48" x 48" Riser
DD-484824R	24" High, 48" x 48" Riser
DD-484832R	32" High, 48" x 48" Riser

DD-482432R
48" x 24" Riser,
32" High
DD-482424R
48" x 24" Riser,
24" High
DD-482416R
48" x 24" Riser,
16" High
DD-482408R
48" x 24" Riser,
8" High

The Duro Deck Road Case protects and transports 6 Duro Decks in an innovative case that features a removeable side and top to allow easy access when loading in and out.

Pro versions store risers as well.



SKU	DESCRIPTION
DD4824X6WPRO	Flight Case for six 48" x 24" Decks w/Risers
DDRCKIT6PRO	Flight Case for six 48" x 48" Decks w/Risers
DDRCKIT6	Flight Case for six 48"x 48" Stage Platforms only (no risers)

DD4812R24H
48" wide 3 Step Kit



Our Step Kits provide a 48" wide, 12" step for easy access to your stage. Choose a 1, 2 or 3 step kit to match the height of the store.

SKU	DESCRIPTION
DD-4812R08*	Step w/8" Riser
DD-4812R16*	2 Steps w/8" & 16" Risers (1 ea)
DD-4812R24*	3 Steps w/8" 16" & 24" Risers (1 ea)

*Use "C" for carpet or "H" for hard surface

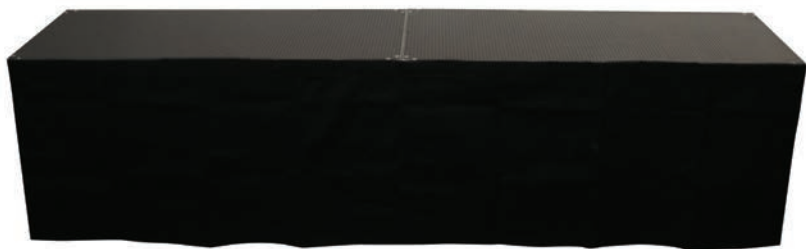
DD4812R16H
48" wide 2 Step Kit



The optional Stage Skirts clip on easily and cover risers for a clean look. These flame retardant treated felt are 48" in length and available in 8", 16", 24" and 32" height sizes.

SKU	DESCRIPTION
SKIRTS (16oz Duvetyne -Made in U.S.A.) Non Pleated	
DD-SKIRT4809	48" Wide Black Skirt- 8" High
DD-SKIRT4816	48" Wide Black Skirt- 16" High
DD-SKIRT4824	48" Wide Black Skirt- 24" High
DD-SKIRT4832	48" Wide Black Skirt- 32" High

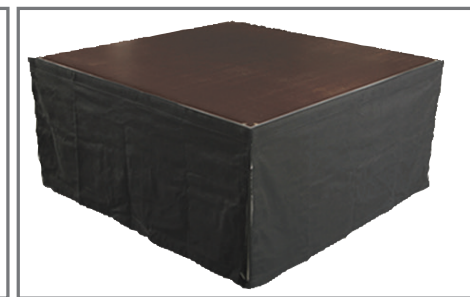
DD4812R08H
48" wide 1 Step Kit



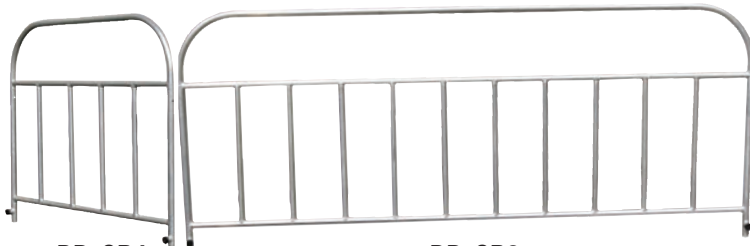
TWO DD-SKIRT4832 SKIRTS
4' wide by 32" high Stage Skirt



Each skirt includes
4 clips or fasteners



Use multiple skirts
to cover corners



DD-GR4
4' Wide, 40" Tall
Stage Guard Rail

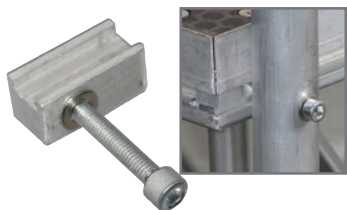
DD-GR8
8' Wide, 40" Tall
Stage Guard Rail

Our Duro Deck Guard Rails come in 48" & 96" lengths. Made of 6061-T6 high polished aluminium, each rail features 1" tubing with heavy duty connectors that can be easily attached at each corner of our Duro Decks.

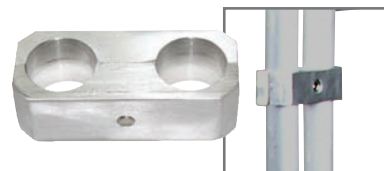
Each rail takes less than five minutes to attach and can be used with any height stage setup for added safety.



SKU	DESCRIPTION
DD-GR4	48" Wide, 40" Tall Stage Guard Rail
DD-GR8	96" Wide, 40" Tall Stage Guard Rail
DD-GRC	Guard Rail Connector
DD-SCP	Stage Corner Plate
DD-GRS	Guard Rail Stud
DD-GB2	Groove Block
DD-CLAMP	Step Clamp
DD-CS4	48" Chair Stopper with hardware
DD-CS8	90" Chair Stopper with hardware
DD-GR2S	Guard Rail for 2 step Stage Ladder
DD-GR3S	Guard Rail for 3 step Stage Ladder



DD-GB2
Groove Block
Hand Rail Fastener



DD-GRC
Guard Rail
Connector



DD-GR
Guard Rail
Mounting Stud



DD-SCP
Stage Corner Plate
Hand Rail Fastener



DD-CLAMP
Step Clamp

The Mobile Pro Stage provides savings in time and labor with its easy setup and tear down design while still having the feel of a permanent stage.

Three configurations of knob plate support to deck attachment are available to work with when designing your stage.

The coffin lock connectors provide a quick and solid attachment between decks.

Stage heights can be easily and quickly adjusted and are secured with the dual locking systems on each vertical support pipe. The folding X-Frame supports are assembled without any additional tools.

FEATURES

- 4' x 8' Hard Surface Decks
- Coffin Interlocking System
- 4' to 6" Height Folding X Frame
- 6" adjustable leveling feet
- Dual Locking Stage Support
- Guard Rails available in 48" and 96" length.

SKU	DESCRIPTION
PS-4X8	4' x 8' Hard Surface Pro Deck
PS-4X8R	4'-6' Adjustable X Frame Pro Riser
PS-KP1	Single Knob Riser-Deck Connecting Plate
PS-KP2	Dual Knob Riser-Deck Connecting Plate
PS-KP4	Quad Knob Riser-Deck Connecting Plate
PS-HR48	4' Guard/Hand Rail for Pro Staging
PS-HR96	8' Guard/Hand Rail for Pro Staging

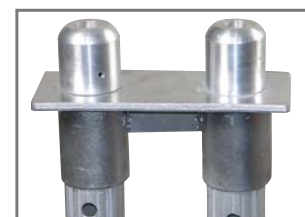
PS-4X8
4' x 8' Hard Surface Pro Stage Deck



PS-4X8R
4'-6' Adjustable Height Folding X-Frame Pro Riser



PS-KP1
Single Knob Plate



PS-KP2
Dual Knob Plate



PS-KP4
Quad Knob Plate



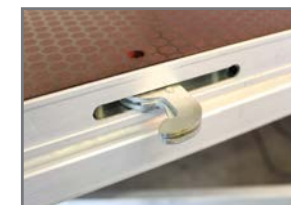
Folding X Frame
Stage Support



Dual Locking
Stage Support

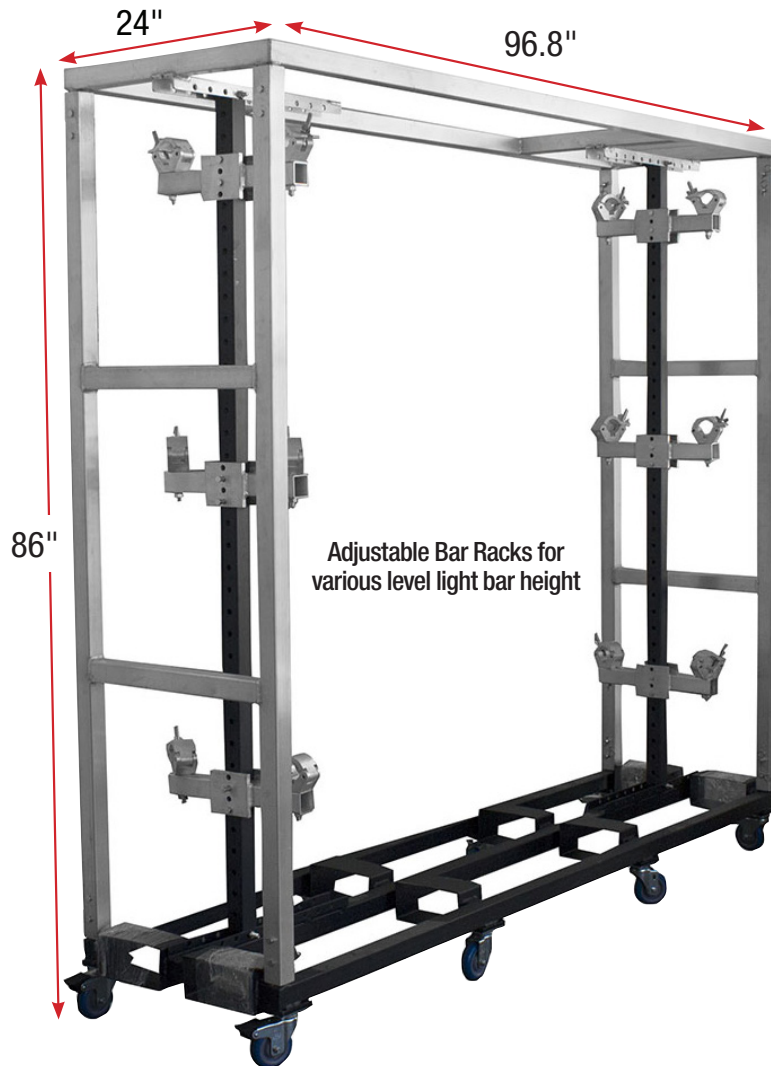


Leveling Feet
Adjusts up to 6'

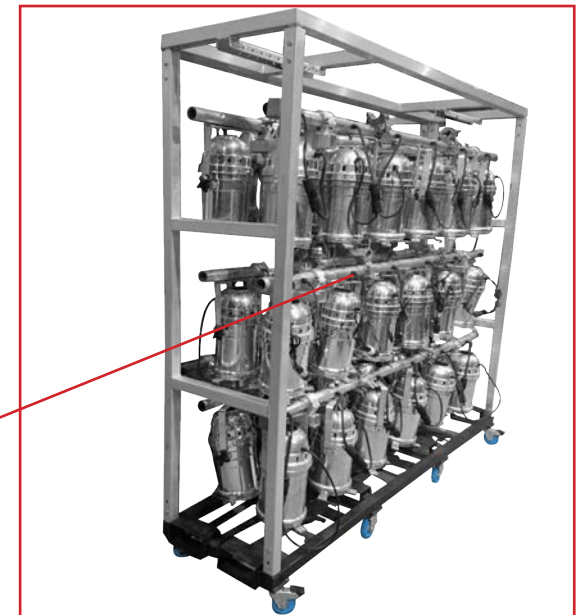


Coffin Interlocking
System

PAR BAR RACK



Our adjustable level Light Bar Rack is designed to transport and store 6 bars with the fixtures installed. Perfect for larger fixture bars such as Par 64s, Leko's, and ACL par bars. Cart features 8 heavy-duty 4" casters



* Pipe bar available.
Sold Separately

SKU	DESCRIPTION
LBRR	96.8"x 86"x 24" Aluminum/steel Par bar rolling rack for up to 6 Par bars



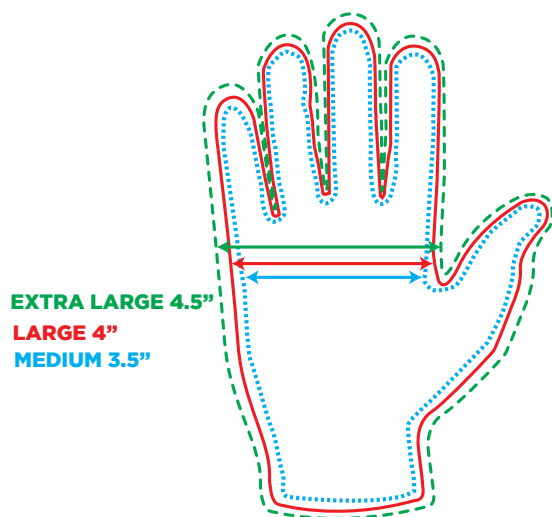
SHOW SOLUTIONS STAGE KREW™ GLOVES

are a must have for working production crews, light techs, riggers and roadies. Available in three sizes.

FEATURES

- Made of High Quality Flexible Fabric with a Sure Grip Palm Faux Leather Stitched Bottom
- Convenient No Slip Elastic Wrist Grip
- Conductive Fingertips Allow Use With Capacitive Touch Screen Devices
- Machine Washable

SKU	DESCRIPTION
SKSSGM	MEDIUM SIZE GIG GLOVES
SKSSGL	LARGE SIZE GIG GLOVES
SKSSGXL	XTRA LARGE SIZE GIG GLOVES



CHANGO WRENCH II™ Pat. Pending

Show Solutions Chango Wrench II is a must have multi-function handy tool for tightening and loosening wing nuts, bolts, and lighting clamps. Fits and works with most clamps and couplers plus more. Also works as handy bottle opener.

Examples of the many uses



AMW2BLK
PRO "Chango"
Monkey Wrench II,
Black



AM2BLU
PRO "Chango"
Monkey Wrench II,
Blue



AM2GLD
PRO "Chango"
Monkey Wrench II,
Gold



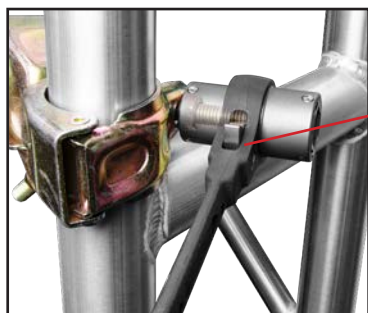
AM2RED
PRO "Chango"
Monkey Wrench II,
Red



AM2SIL
PRO "Chango"
Monkey Wrench II,
Silver

PODGER RATCHET WRENCH

17, 21, 19, 24 mm



Long Thread pass through socket design allows for use on extra-long threaded and shoulder bolts.

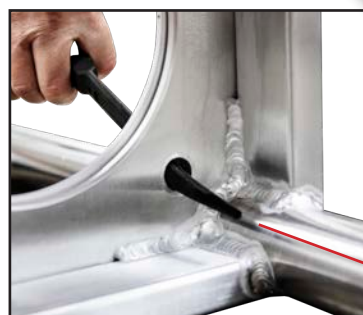


Multiple socket sizes fits popular truss nut and bolt sizes.

- Long Thread Pass through design
- Flat Tip Pry Bar Design
- Socket sizes 17/21mm & 19/24mm
- Material: Cr-Mo, Handle: Cr-V (ie: impact socket)
- Finishing: Manganese phosphate
- Great tool for scaffold professionals

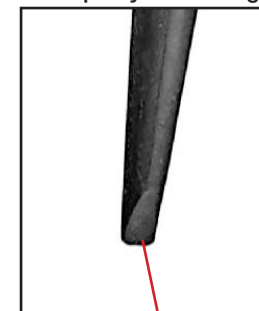
Sure Lock Double Tooth Design

Podger Ratchet Wrench is the latest addition to the lineup of tools here at Show Solutions. Can be used on bolt head sizes 17, 19, 21 and 24mm.



Tapered flat tip pry bar design allows for fast alignment of truss bolt holes to easily insert bolts between sticks, plates or corner blocks.

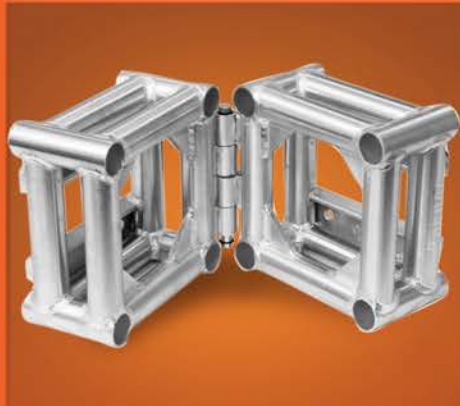
Flat Tip Pry Bar Design





SHOW SOLUTIONS®

STRONG STRUCTURAL SUPPORT MADE EASY!



SHOW SOLUTIONS®

Copyright© 2020 Show Solutions

809 West Santa Anita St, San Gabriel, CA 91776

Tel: (626) 588-2527 • Fax: (626) 588-2525

www.ShowSolutions.com